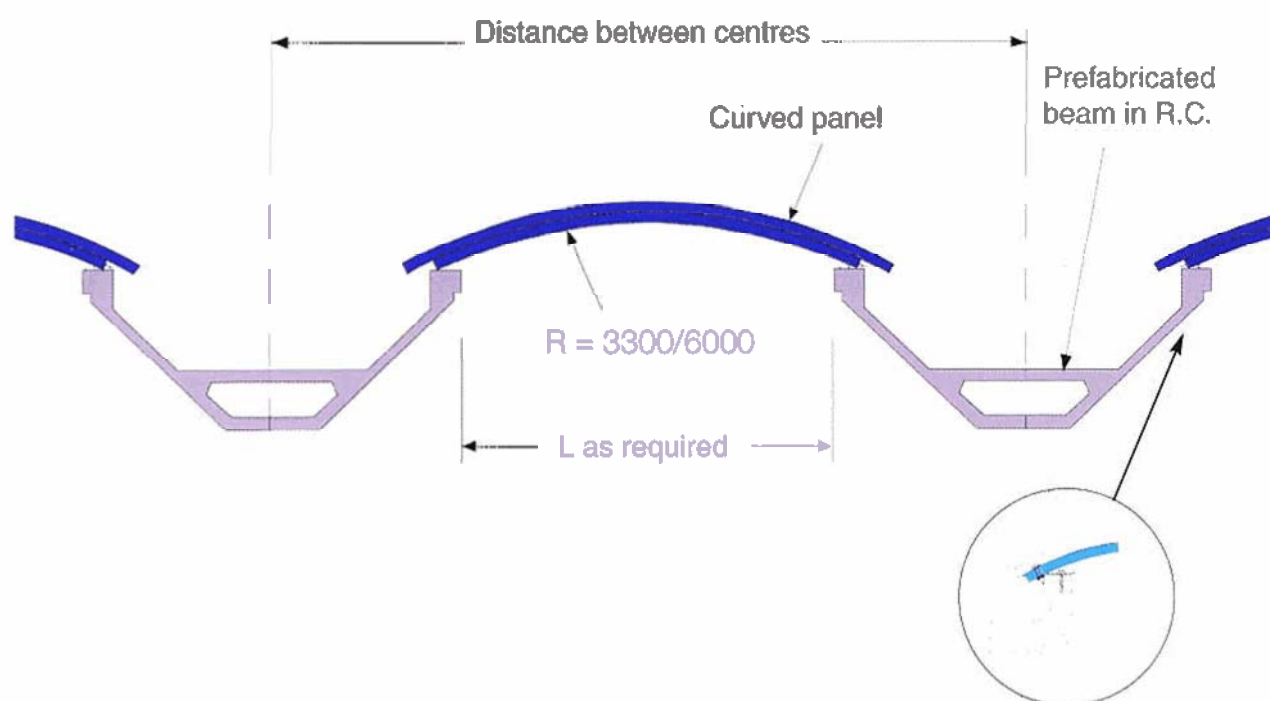
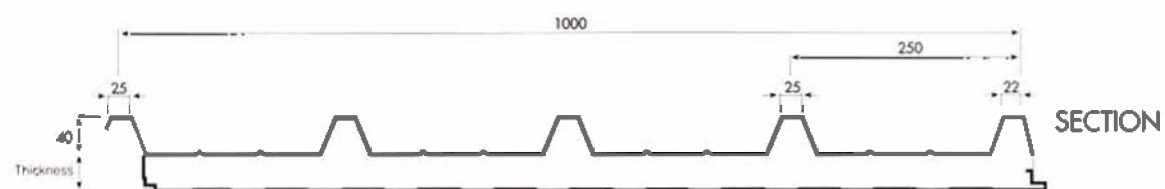


In this section we illustrate by way of suggestion for designers and fitters, some of the commonest construction details used in installation, with simplified diagrams which go some way towards answering some of the most widespread problems which we are asked to clarify at the installation stage.

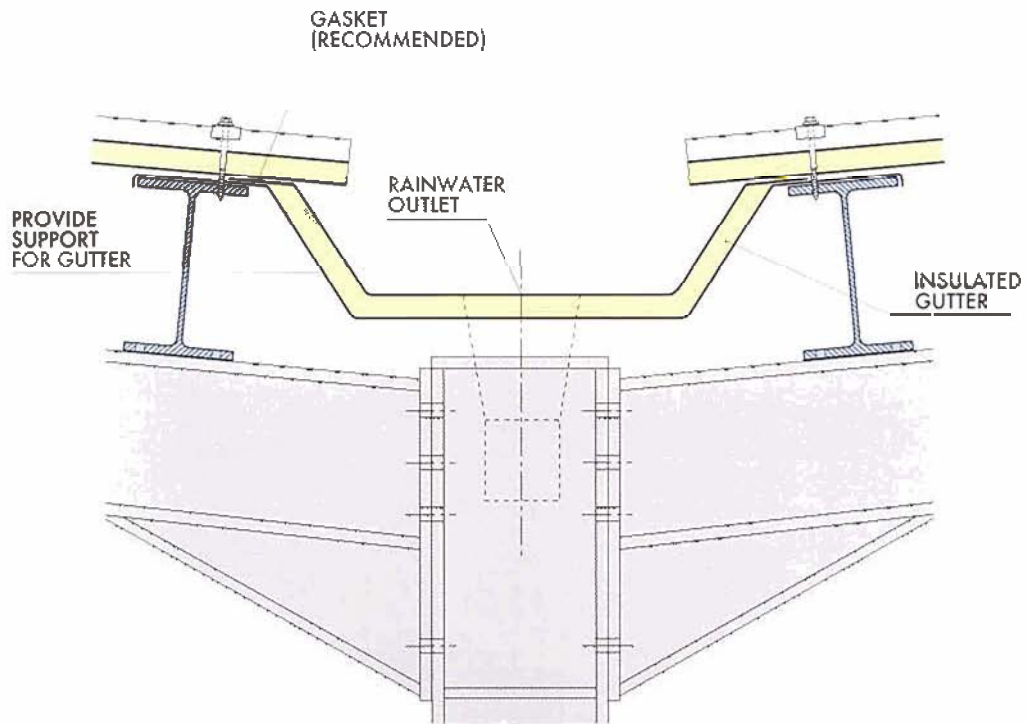
C1 CONSTRUCTION DETAIL FOR CURVED PANEL



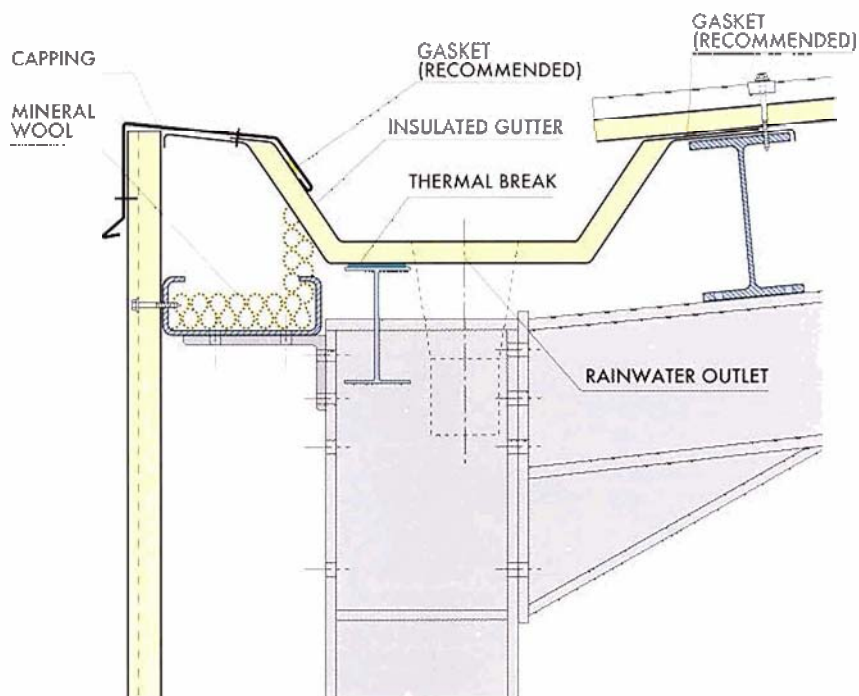
CURVED PANEL

C2

CONSTRUCTION DETAILS FOR POLYURETHANE PANELS

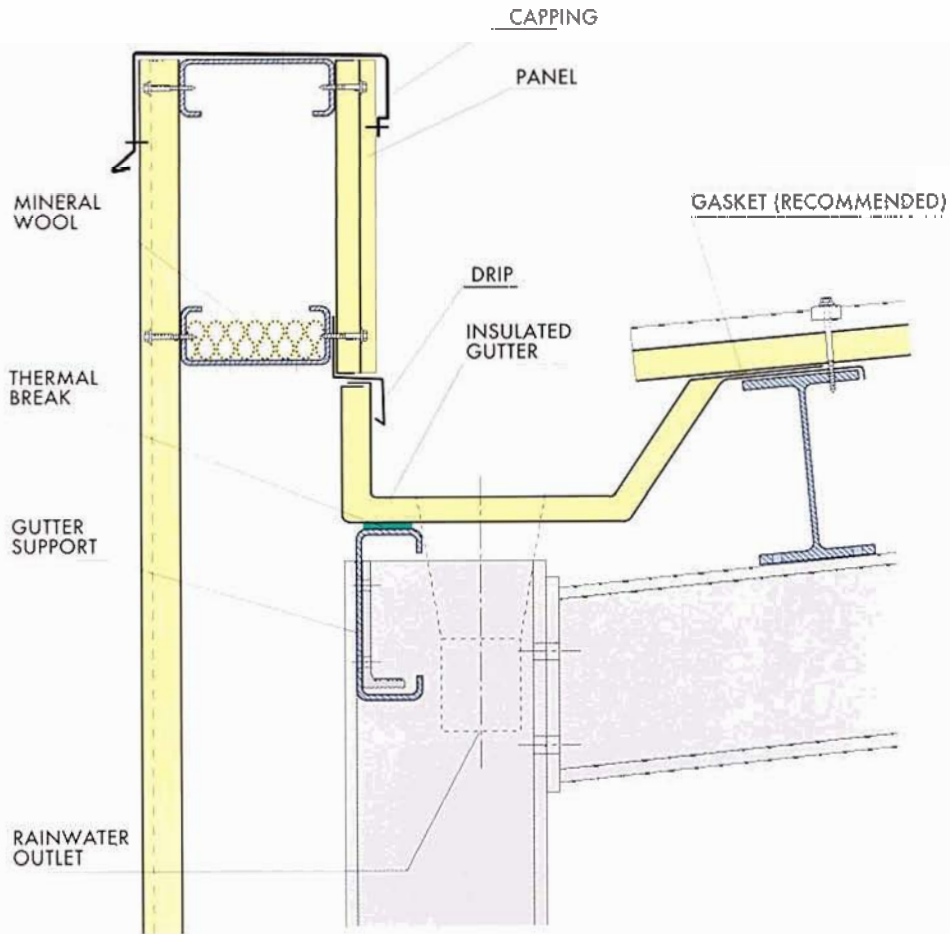


GUTTER DETAIL – Central valley

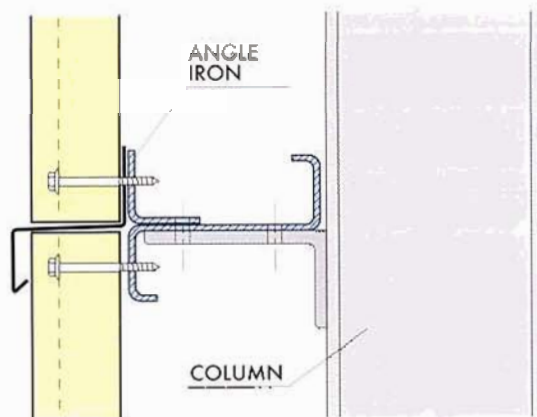


GUTTER DETAIL – External gutter (with the possibility of enlargement)

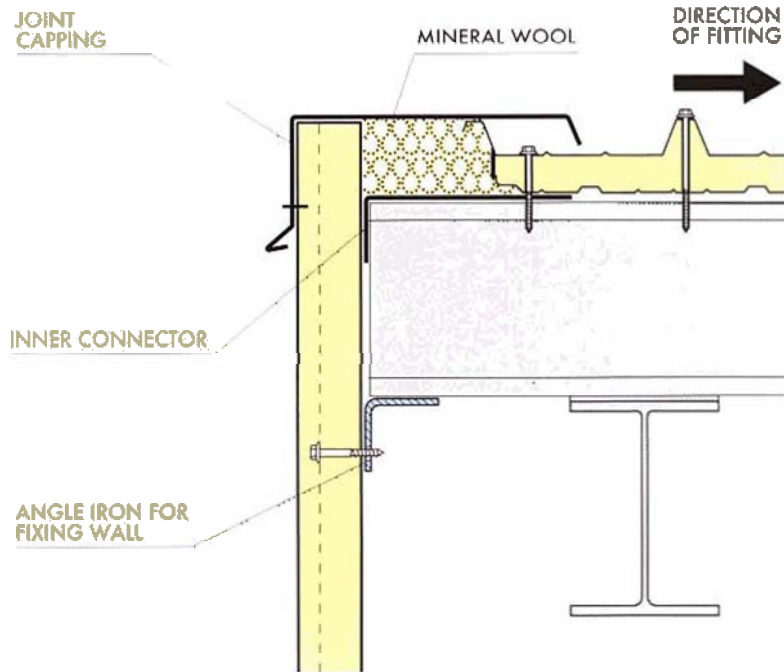
C2.1



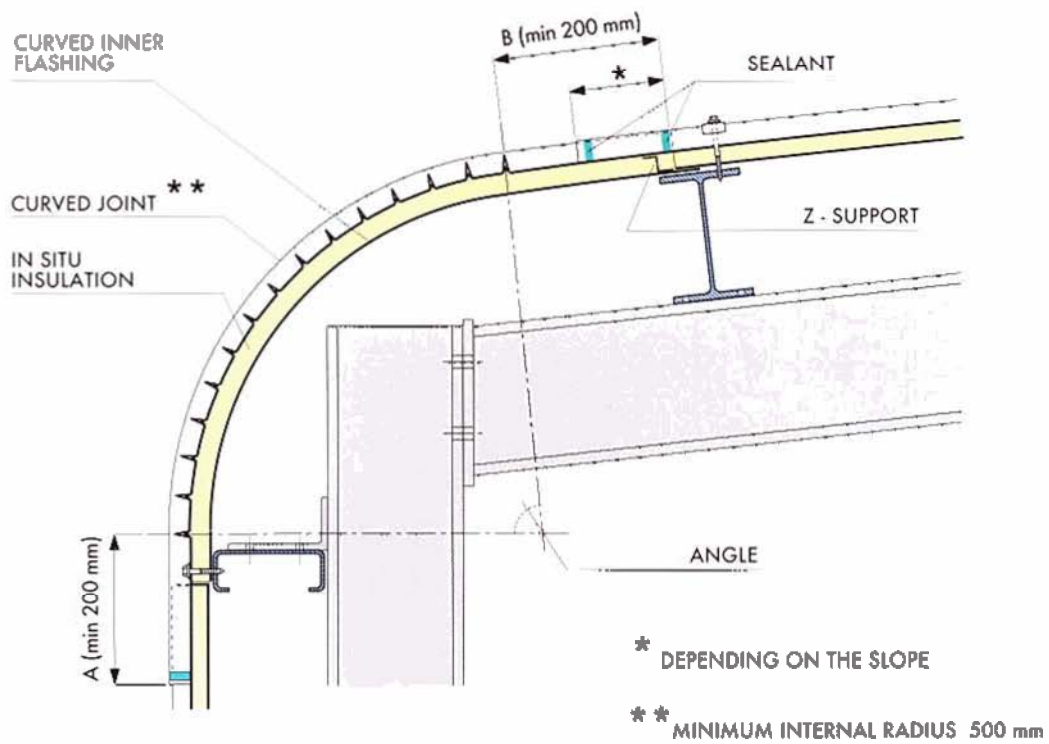
GUTTER DETAIL – External gutter (with parapet)



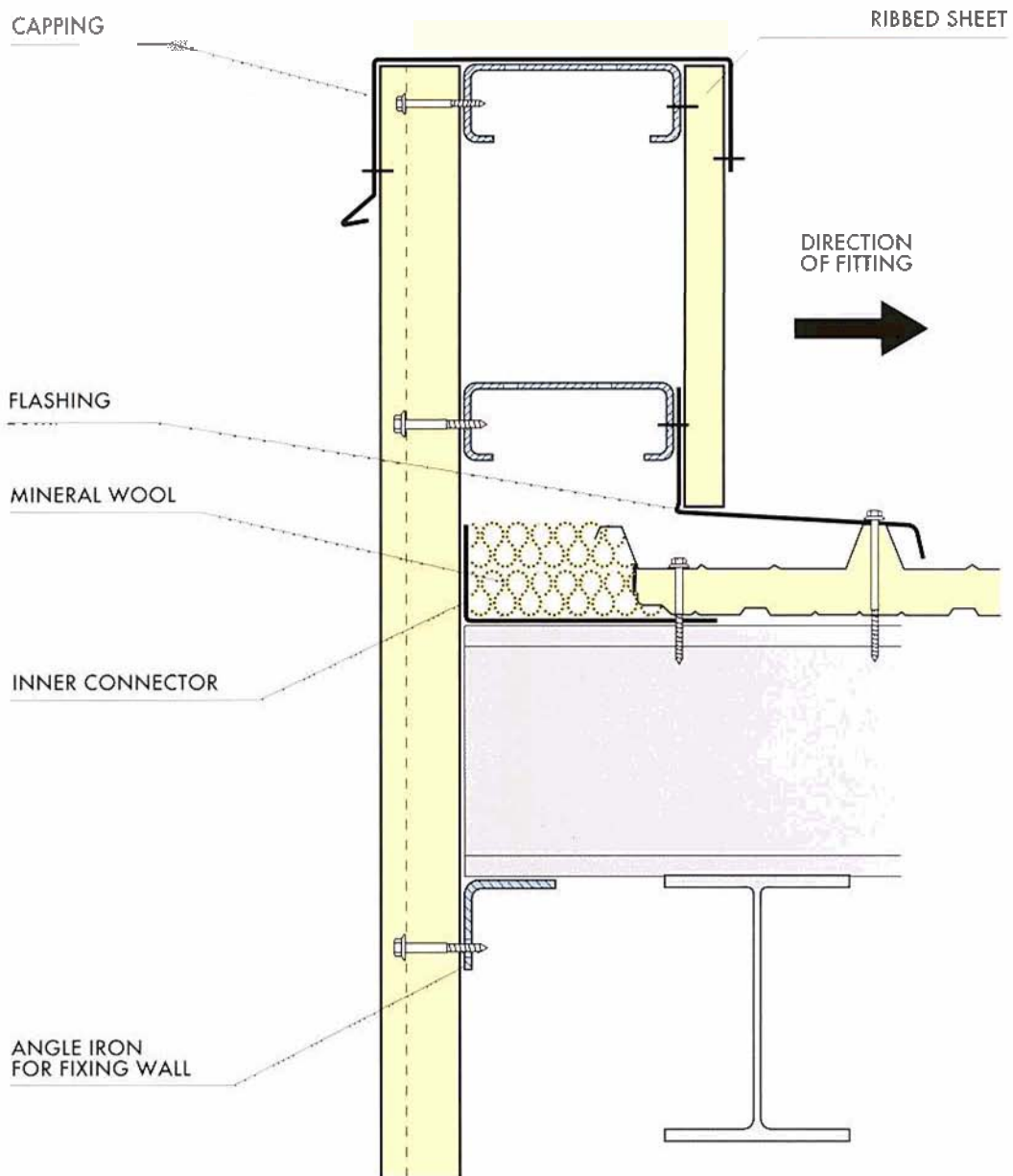
PANEL TO PANEL JOINT



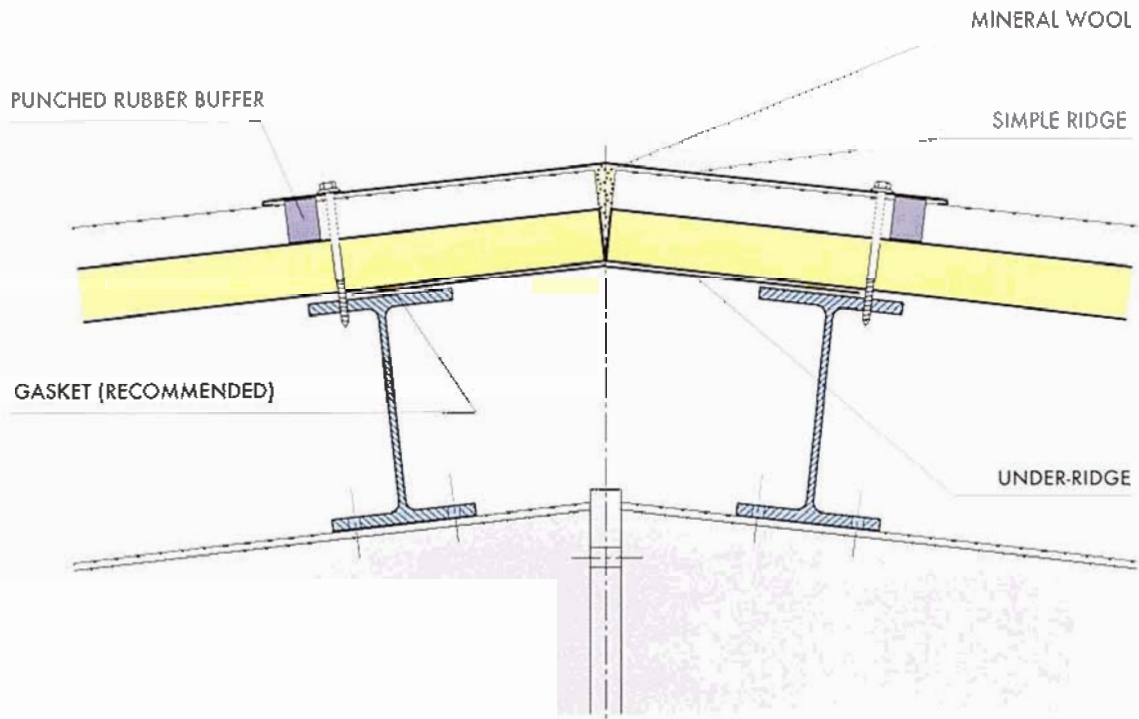
EDGE DETAIL - Curved connector



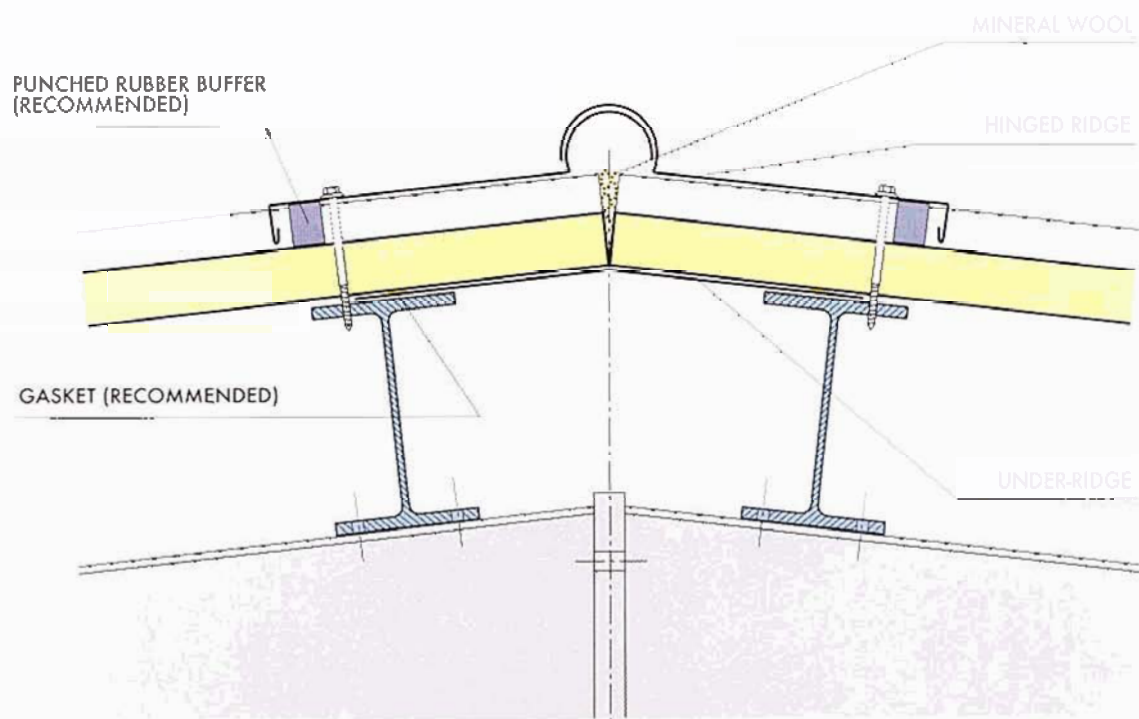
EDGE DETAIL - Joint at head of wall



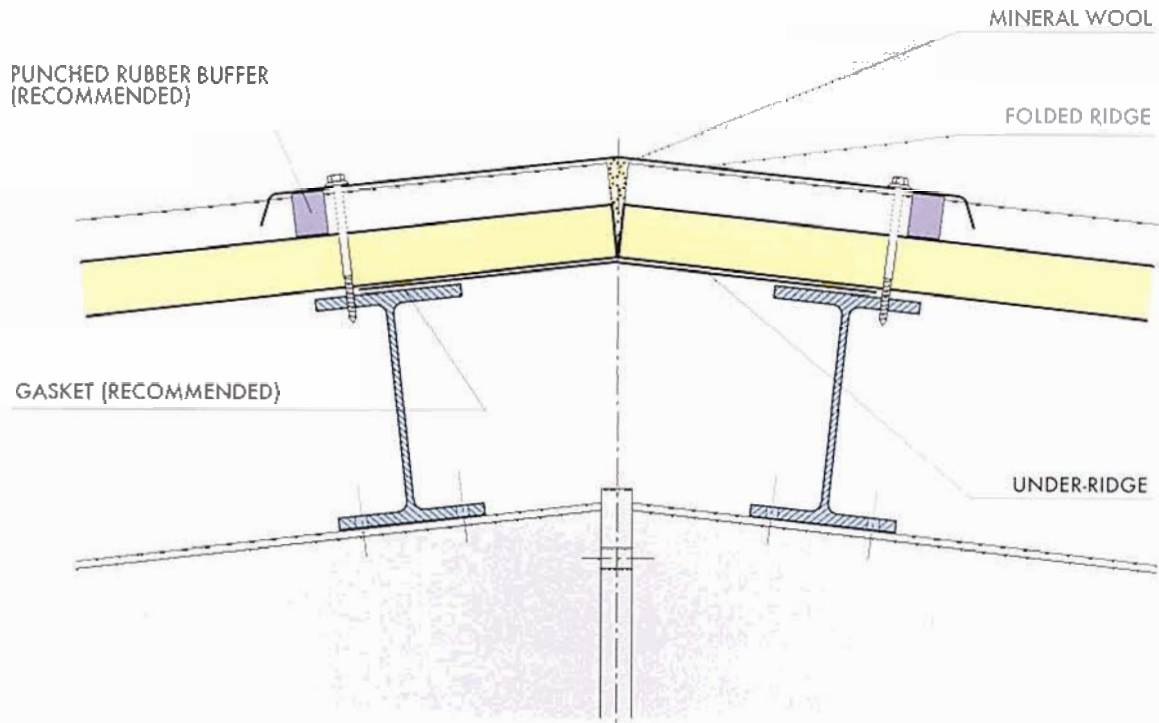
EDGE DETAIL – Joint at head of wall (with parapet)



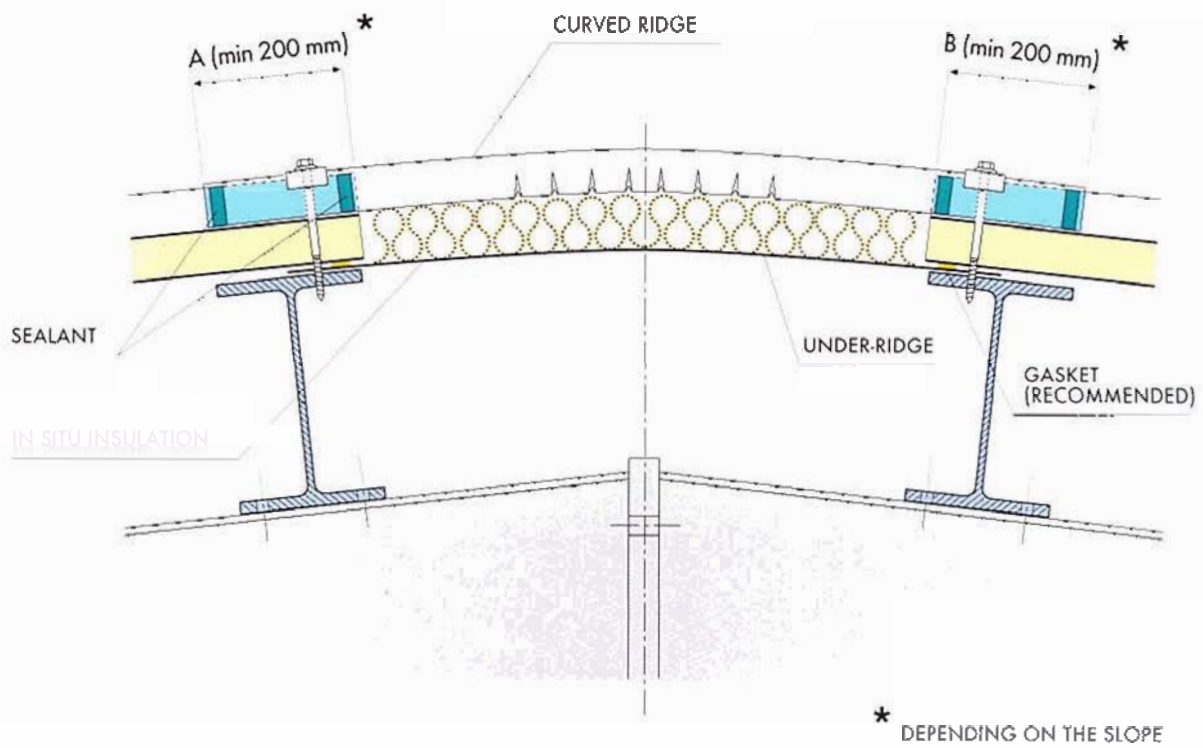
RIDGE DETAIL – Simple ridge



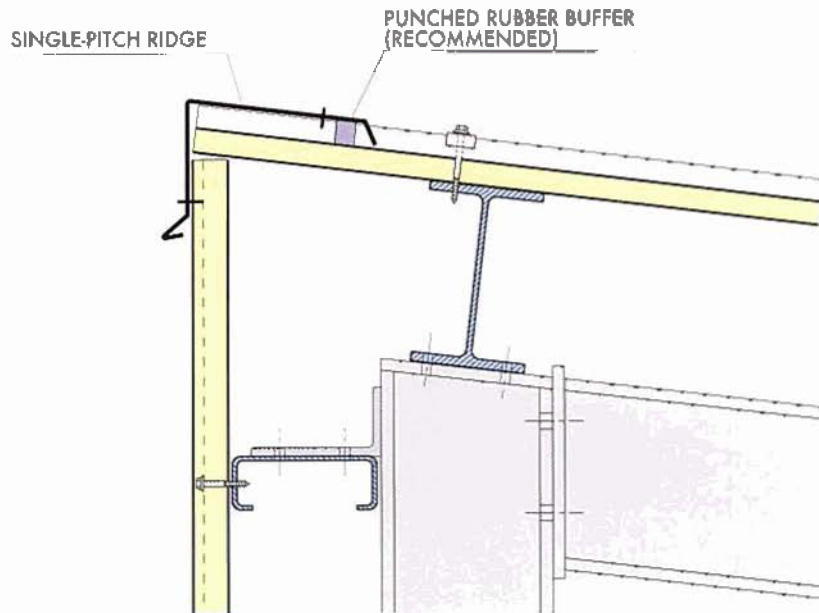
RIDGE DETAIL – Hinged ridge



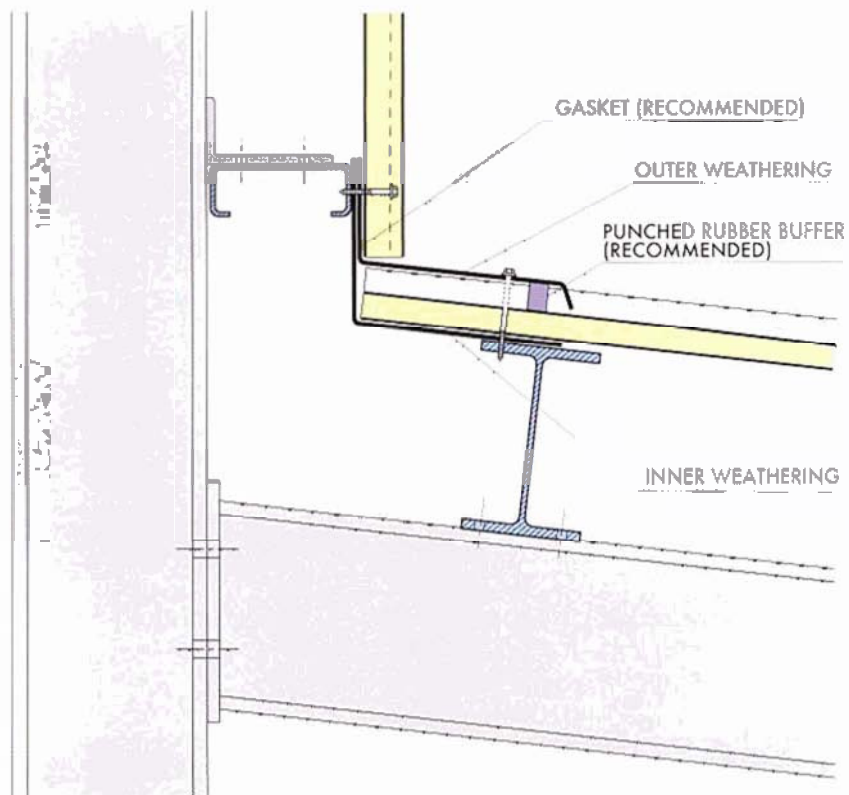
RIDGE DETAIL - Curved ridge



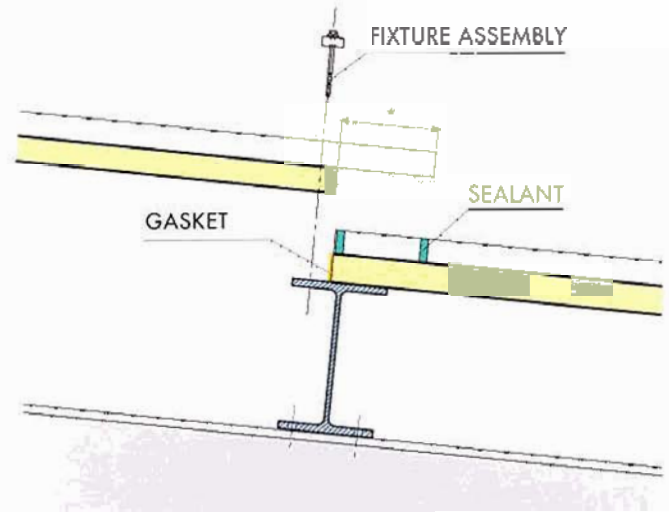
RIDGE DETAIL - Folded ridge



RIDGE DETAIL – Single-pitch ridge

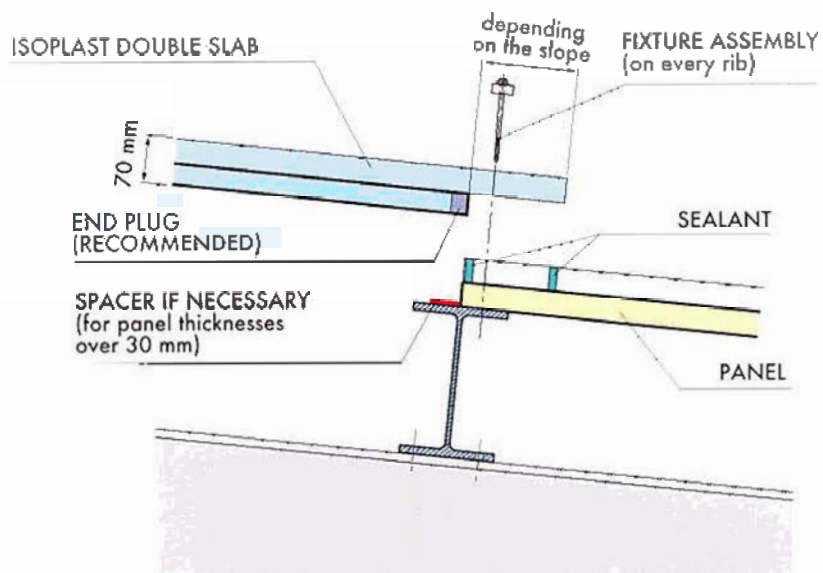


RIDGE DETAIL – Single-pitch ridge below wall

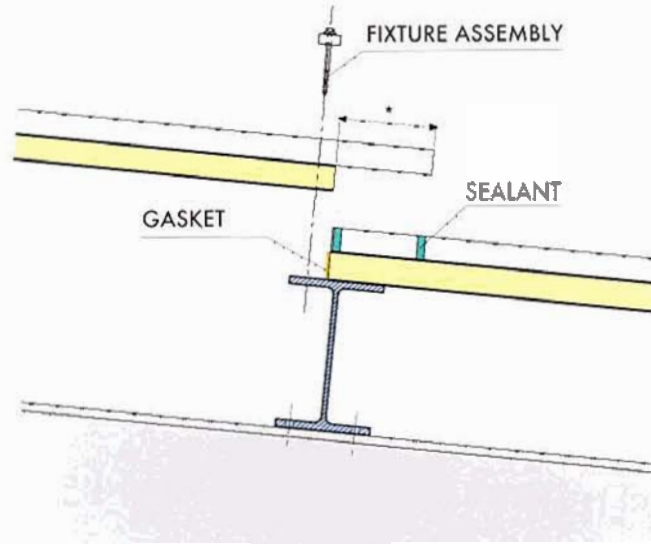


• DEPENDING ON TH...

OVERLAP AT HEAD OF PANEL

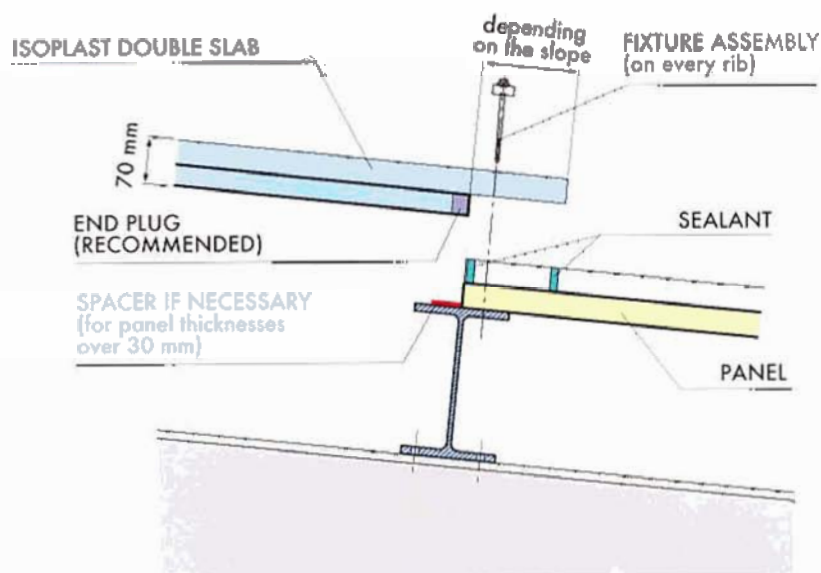


ISOPLAST DETAIL - Overlap at head of panel

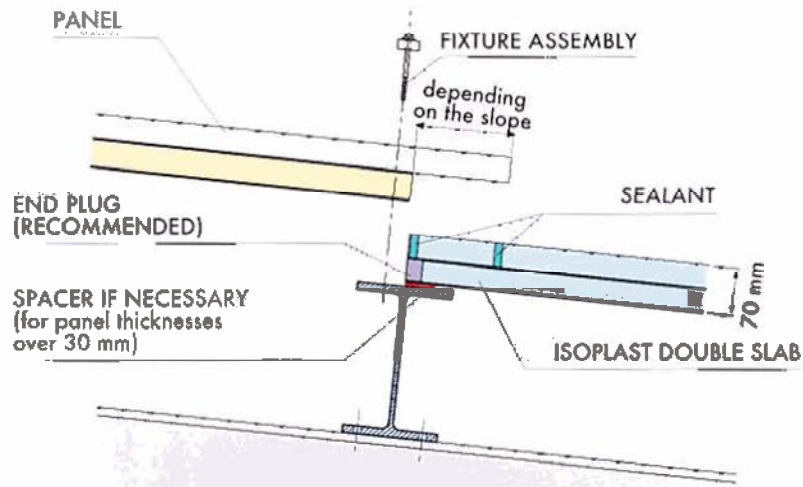


* DEPENDING ON THE SLOPE

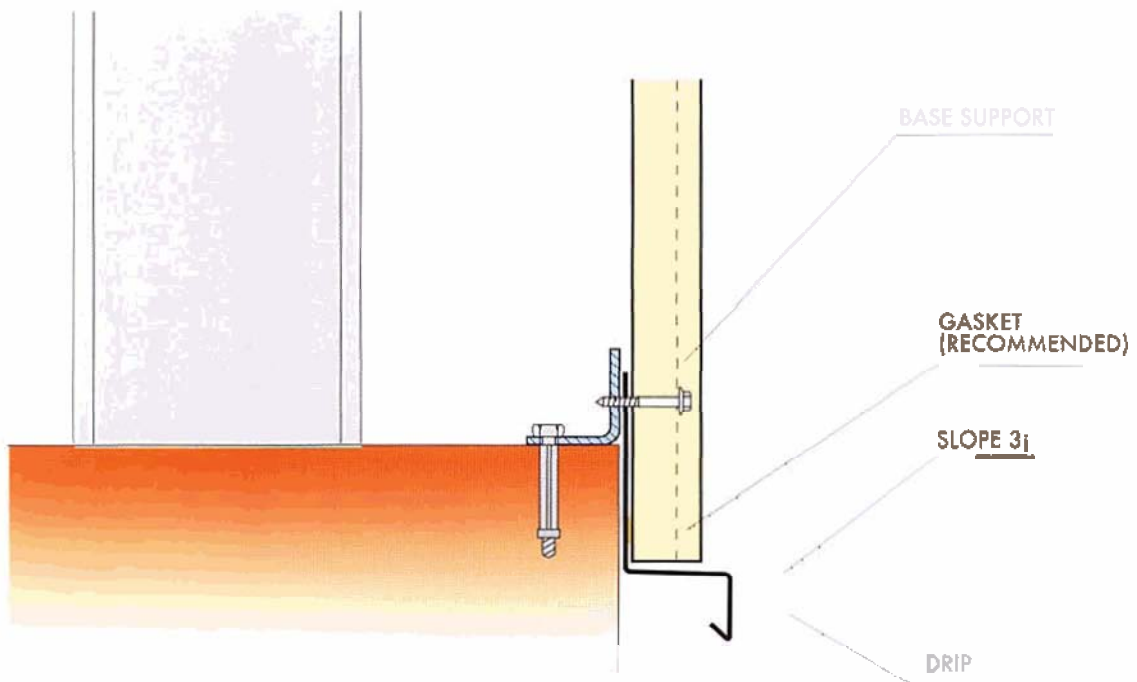
OVERLAP AT HEAD OF PANEL



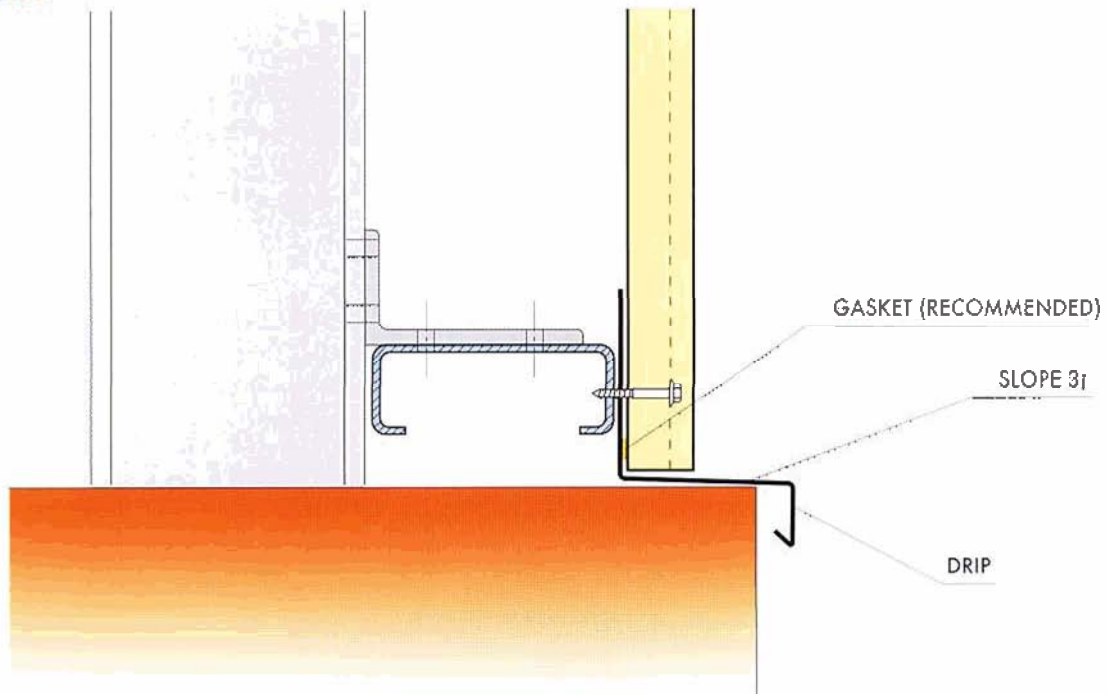
ISOPLAST DETAIL - Overlap at head of panel



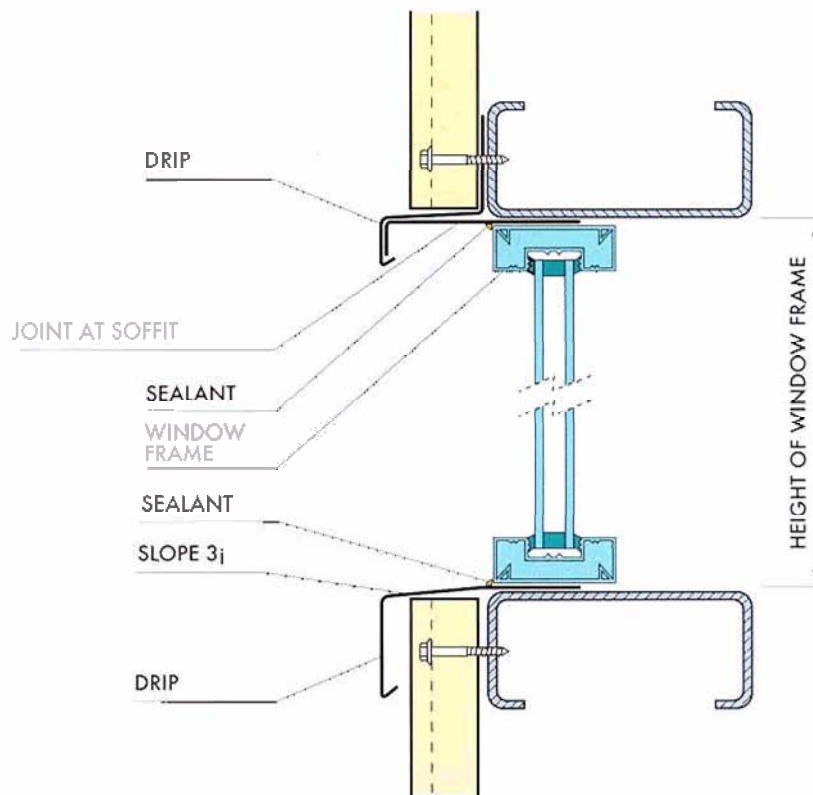
ISOPLAST DETAIL - Overlap at head of Isoplast panel



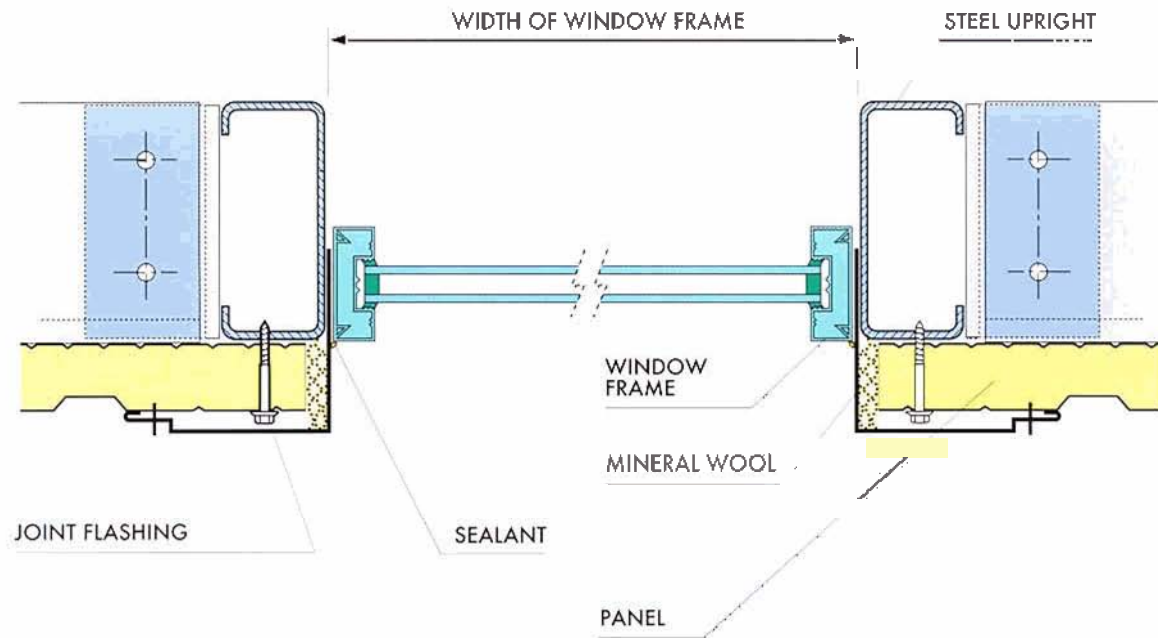
DRIP AT BASE



DRIP AT BASE



FITTING OF WINDOW FRAME (vertical section)



FITTING OF WINDOW FRAME (horizontal section)