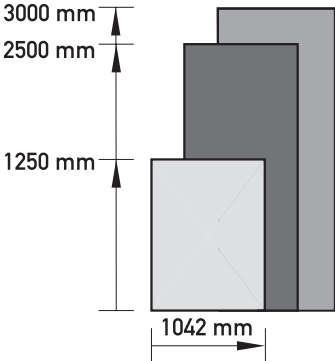
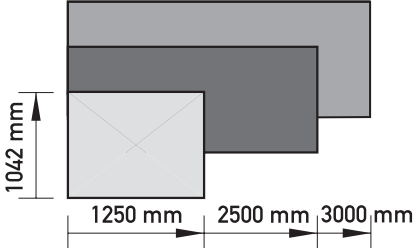




## F-WELL 09 CORRUGATED SHEETS

# FAÇADE

## TECHNICAL GUIDELINES

	F-Well 09 vertical arrangement	F-Well 09 horizontal arrangement
<b>Colors</b> for color pattern, refer to the price list	Tectura	
<b>Production size</b> [mm] (Tolerance acc. to ÖNORM EN 494)	1250 x 1130 2500 x 1130 3000 x 1130	1250 x 1130 2500 x 1130 3000 x 1130
<b>Usable size</b> [mm]		
<b>Thickness</b> [mm] (tolerance acc. to ÖNORM EN 494)	6.3	6.3
<b>Trimming of sheets</b>	NOT required	
<b>Punching</b> ø 9,5 mm	NOT pre-punched at the factory Holes drilled on site	
<b>Raw thickness</b> (air dry)	$\delta \sim 1400 \text{ kg/m}^3$	
<b>Frost resistance</b>	frost-resistant	
<b>Flammability class</b>	non-flammable A	
<b>Steam diffusion</b>	$\mu = 400$	
<b>Breaking load</b>	$\geq 2500 \text{ N/m}$	
<b>Bending moment</b>	$\geq 55 \text{ N/m}$	
<b>K-factor</b>	$\lambda = \text{approx. } 0.5 \text{ W/mK}$	
<b>Thermal expansion</b>	$\Delta l \cong 0.01 \text{ mm/mK}$	
<b>Dilatation</b> (Test acc. to ÖNORM B 3211)	$\Delta l \cong 1.5 \text{ mm/m}$	
<b>Joint width</b>	10 mm	
<b>Accessory</b>	NOT delivered proportionately	
<b>Raw edge coating</b>	NOT required	

66



All Eternit products have been granted the German CE mark after stringent, independent testing

Further information at [www.eternit.at](http://www.eternit.at)



## F-WELL 09 CORRUGATED SHEETS

### TECHNICAL GUIDELINES

	max. usable size	Production size
<b>Formats</b>	1250 x 1042 mm 2500 x 1042 mm 3000 x 1042 mm	1250 x 1130 mm 2500 x 1130 mm 3000 x 1130 mm
<b>Thickness (mm)</b>	6.3	
<b>Color system</b>	Tectura	
<b>Arrangement</b>	vertical	horizontal
<b>Joint width</b>	min. thickness of material	

#### FASTENING

##### Wood substructure

– by means of **color corrugated cladding screws 4.8 x 50/ K19 mm** (stainless steel) with slotted disc and seal and EPDM centering bush (the seal compensates for the curve of the corrugated sheet)

##### Aluminum substructure

– by means of **color corrugated cladding screws 4 x 25/ K19 mm** with slotted disc and seal and EPDM centering bush (the seal compensates for the curve of the corrugated sheet)

#### SHEET ALIGNMENT

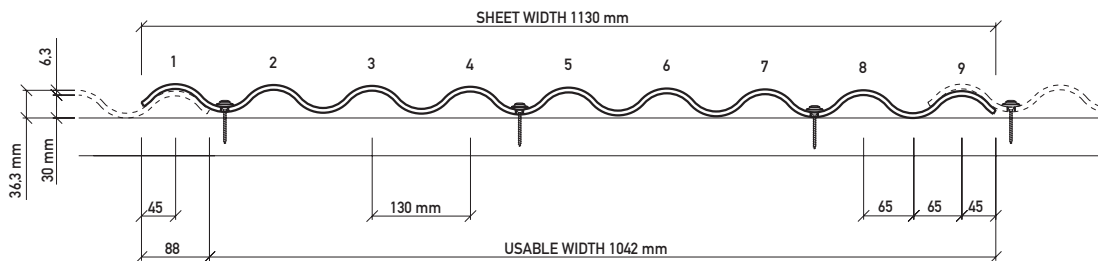
##### Standard sheet with punched edge

– all punched edges must be trimmed  
– all fastening holes are to be drilled on site

#### JOINT PROFILE

##### Cut to size at the factory on request

– edges are trimmed  
– fastening holes must be drilled on site or pre-drilled at the factory



#### GEOMETRY OF CORRUGATED SHEET PROFILE 9

# FAÇADE

## TECHNICAL GUIDELINES

LENGTH 1250 mm and 2500 mm Maximum distance between the cross joint/profile and fastening rows - up to 119 cm													
Wind speed [km/h]	95				115				135				
Building height (up to)	10 m	15 m	25 m	50 m	10 m	15 m	25 m	50 m	10 m	15 m	25 m	50 m	
urban centre	area	N	N	N	N	N	N	N	N4	N	N	N4	N4
	outskirts	N4	N4	N4	N6	N6	N6	R	R4	R4	R4	R4	R6
smaller towns	area	N	N	N	N	N	N	N4	N4	N4	N4	N4	R
	outskirts	N4	N4	N4	R	R	R	R4	R4	R4	R4	R4	R6
shoreline, large plain	area	N	N	N	N	N4	N4	N4	N4	N6	N6	R	R
	outskirts	N6	R	R	R4	R4	R4	R4	R4	R6	R6	R6	*

LENGTH 3000 mm Maximum distance between the cross joint/profile and fastening rows - up to 96 cm													
Wind speed [km/h]	95				115				135				
Building height (up to)	10 m	15 m	25 m	50 m	10 m	15 m	25 m	50 m	10 m	15 m	25 m	50 m	
urban centre	area	N	N	N	N	N	N	N	N	N	N	N	N4
	outskirts	N	N	N	N4	N4	N4	N4	N6	N6	N6	N6	R6
smaller towns	area	N	N	N	N	N	N	N	N	N	N4	N4	
	outskirts	N	N4	N4	N4	N4	N6	N6	R6	N6	R6	R6	*
shoreline, large plain	area	N	N	N	N	N	N	N4	N4	N4	N4	N4	N6
	outskirts	N4	N4	N4	N6	N6	N6	R6	R6	R6	R6	*	*

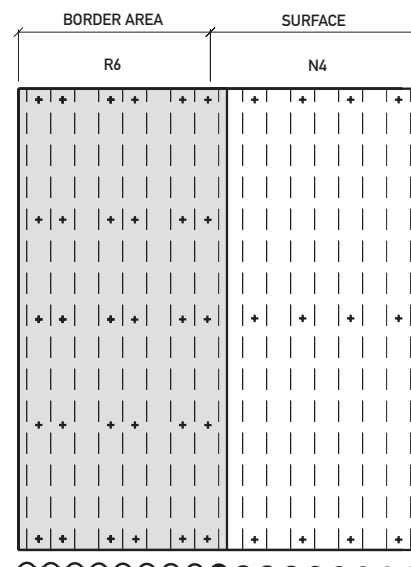
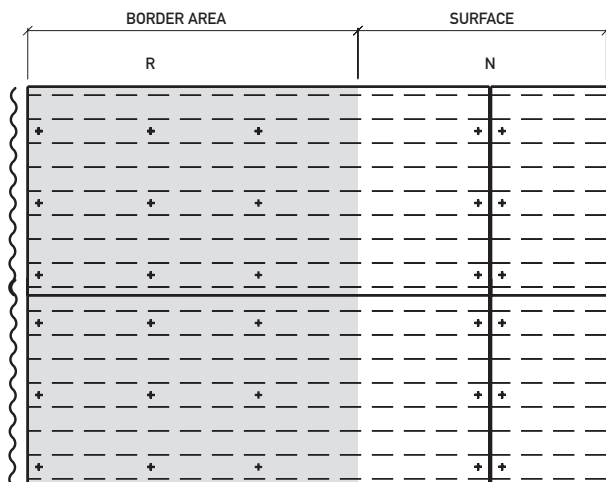
\*Please contact the customer service technician at Eternitwerke Ludwig Hatschek AG (07672707-0, office@eternit.at)

Border area diagram - see page 19

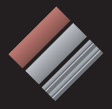
- N 3 fastenings per row (Normal - Standard)
- R additional support at the middle / 3 fastenings per row
- N4 more fastenings required for each row (e.g. 4)
- R6 additional support at the middle / more fastenings required for each row (e.g. 6)

68

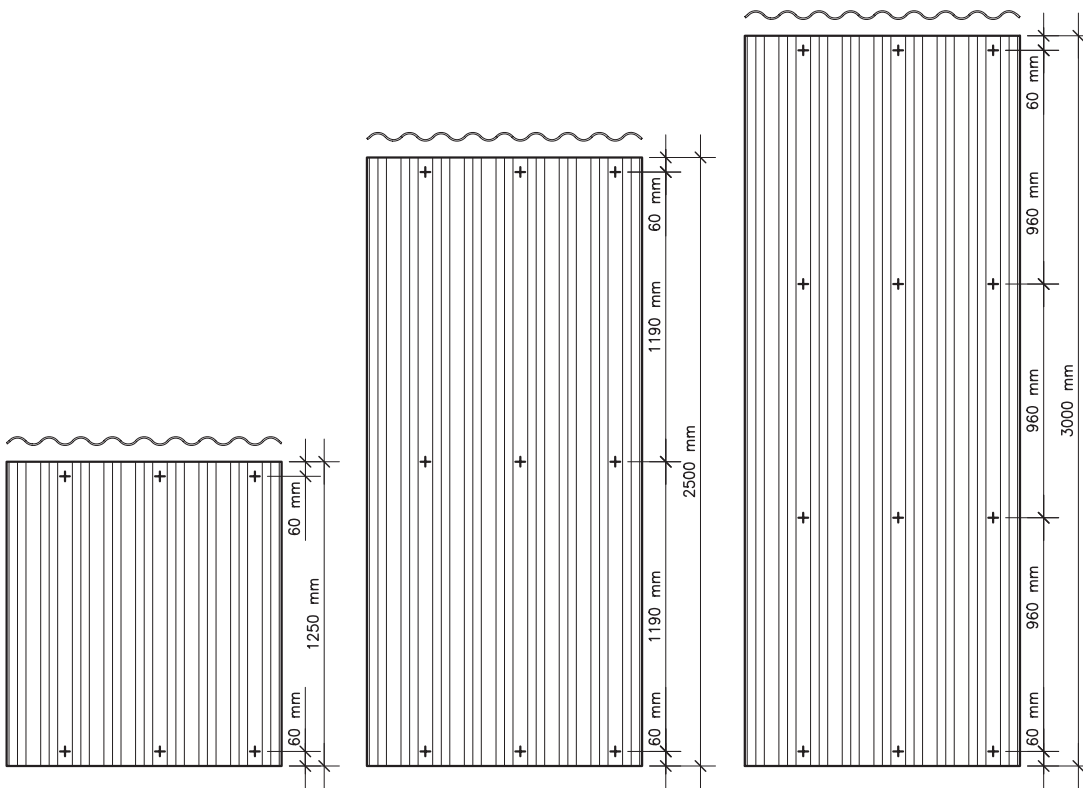
Further information at [www.eternit.at](http://www.eternit.at)



EXAMPLE: FASTENING AT THE BORDER AREA OF THE FAÇADE



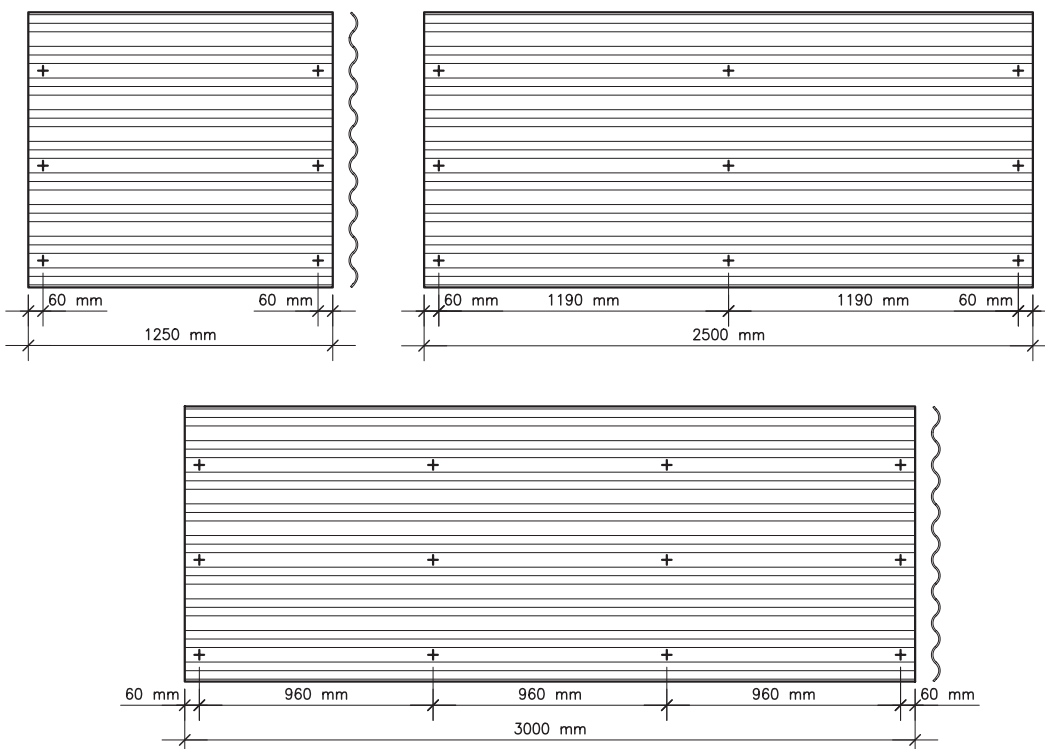
**TECHNICAL  
GUIDELINES**



**STANDARD FASTENING PLAN N – VERTICAL (3 FASTENINGS PER ROW, HORIZONTAL)**

**ALL FASTENING HOLES MUST BE DRILLED AT THE CONSTRUCTION SITE!**

**+** DRILLED HOLES Ø 9.5 mm

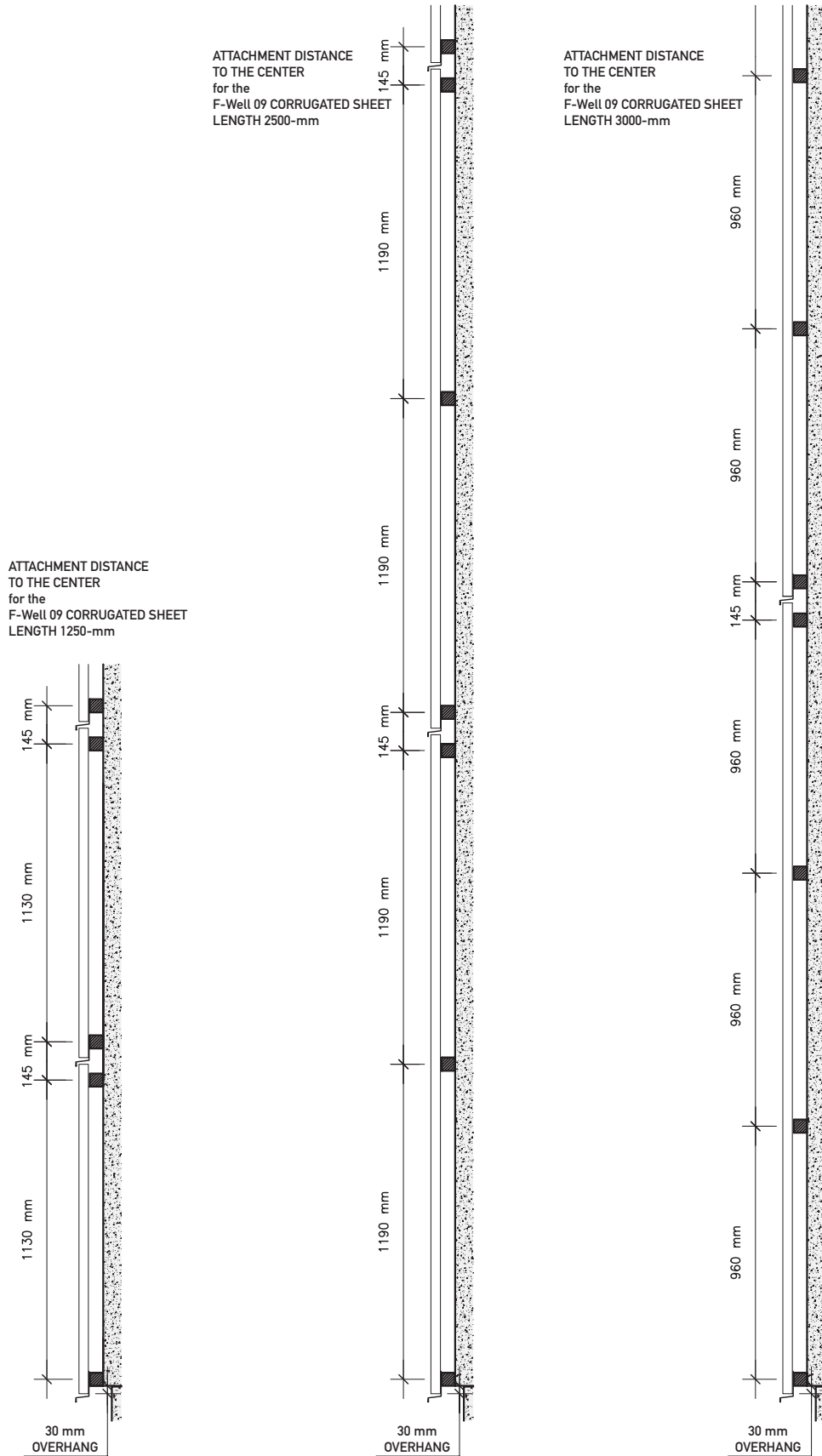


**STANDARD FASTENING PLAN N – HORIZONTAL (3 FASTENINGS PER ROW, VERTICAL)**

**ALL FASTENING HOLES MUST BE DRILLED AT THE CONSTRUCTION SITE!**

**+** DRILLED HOLES Ø 9.5 mm

VERTICAL  
WOOD  
SUBSTRUCTURE

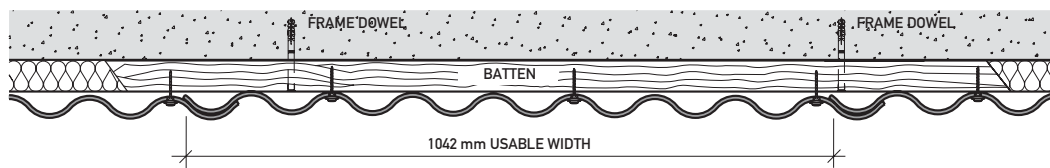


70

Further information at [www.eternit.at](http://www.eternit.at)



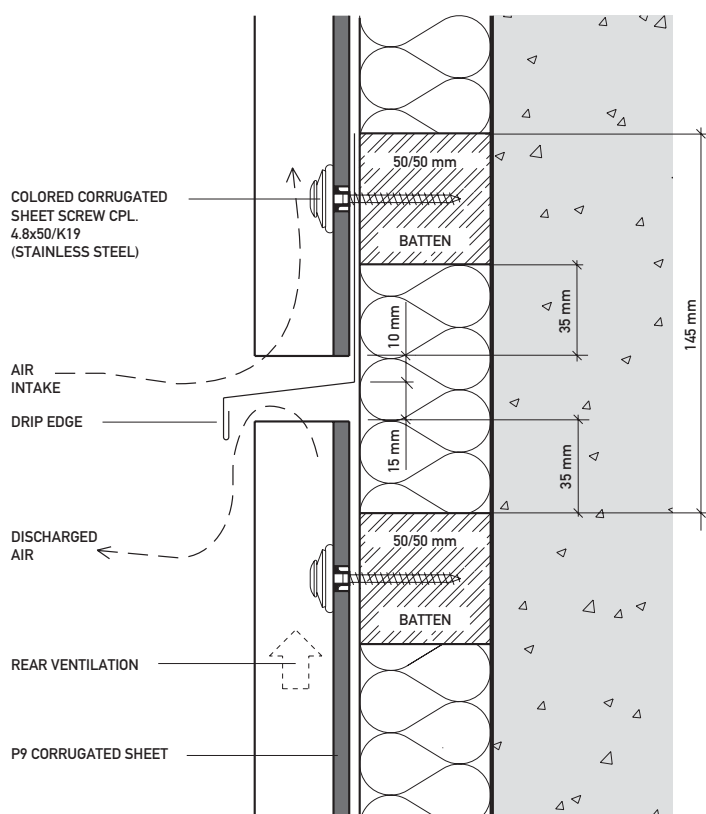
VERTICAL  
WOOD  
SUBSTRUCTURE



SHEET ARRANGEMENT  
The embossed stamp  
must be covered over!

HORIZONTALLY CUT

DETAIL 2

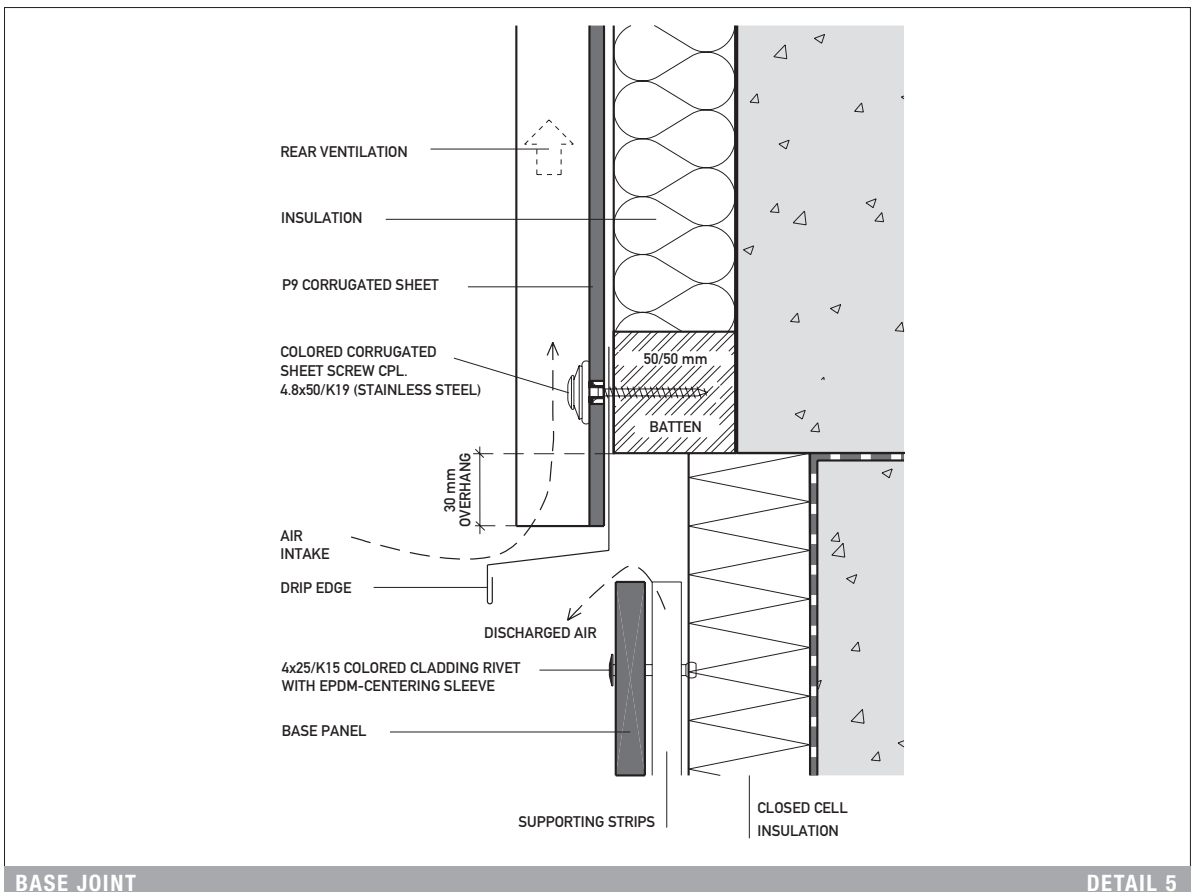
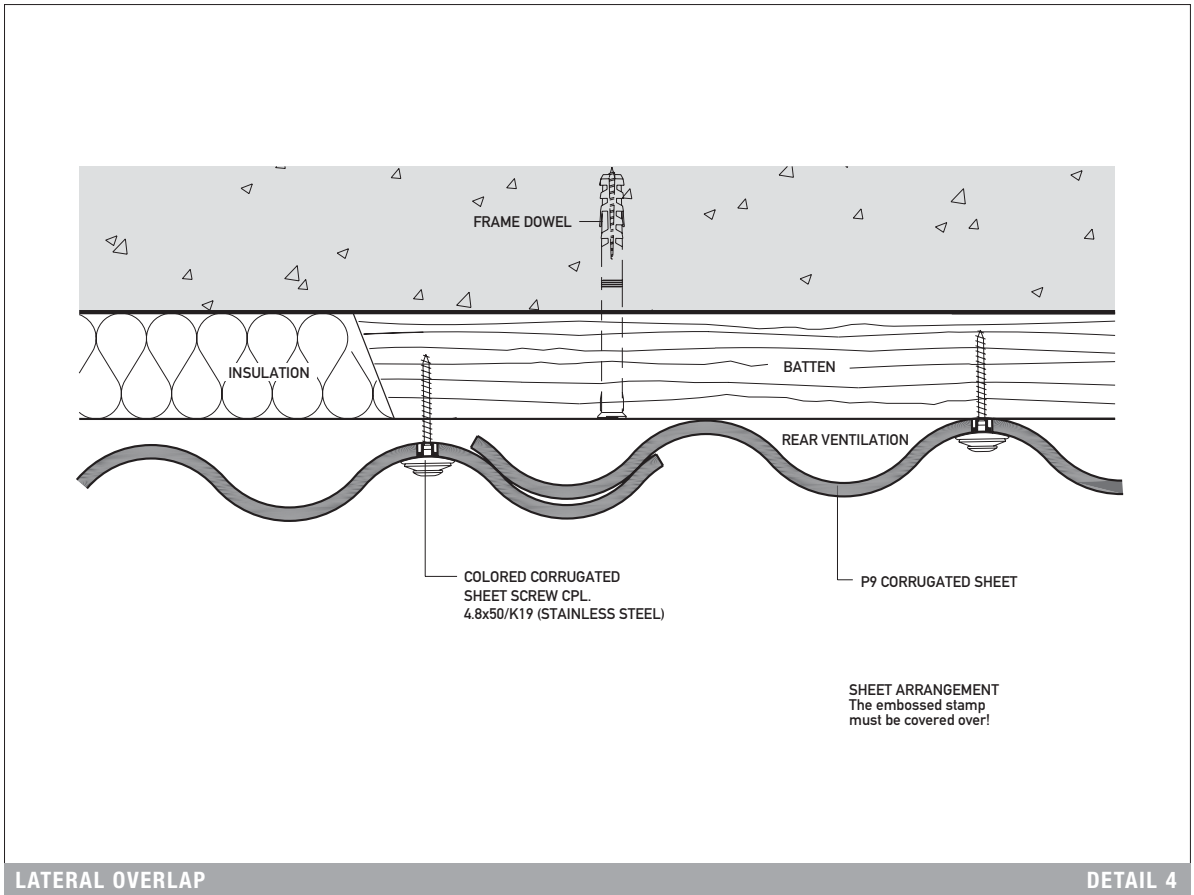


HORIZONTAL JOINT WITH DRIP EDGE

DETAIL 3

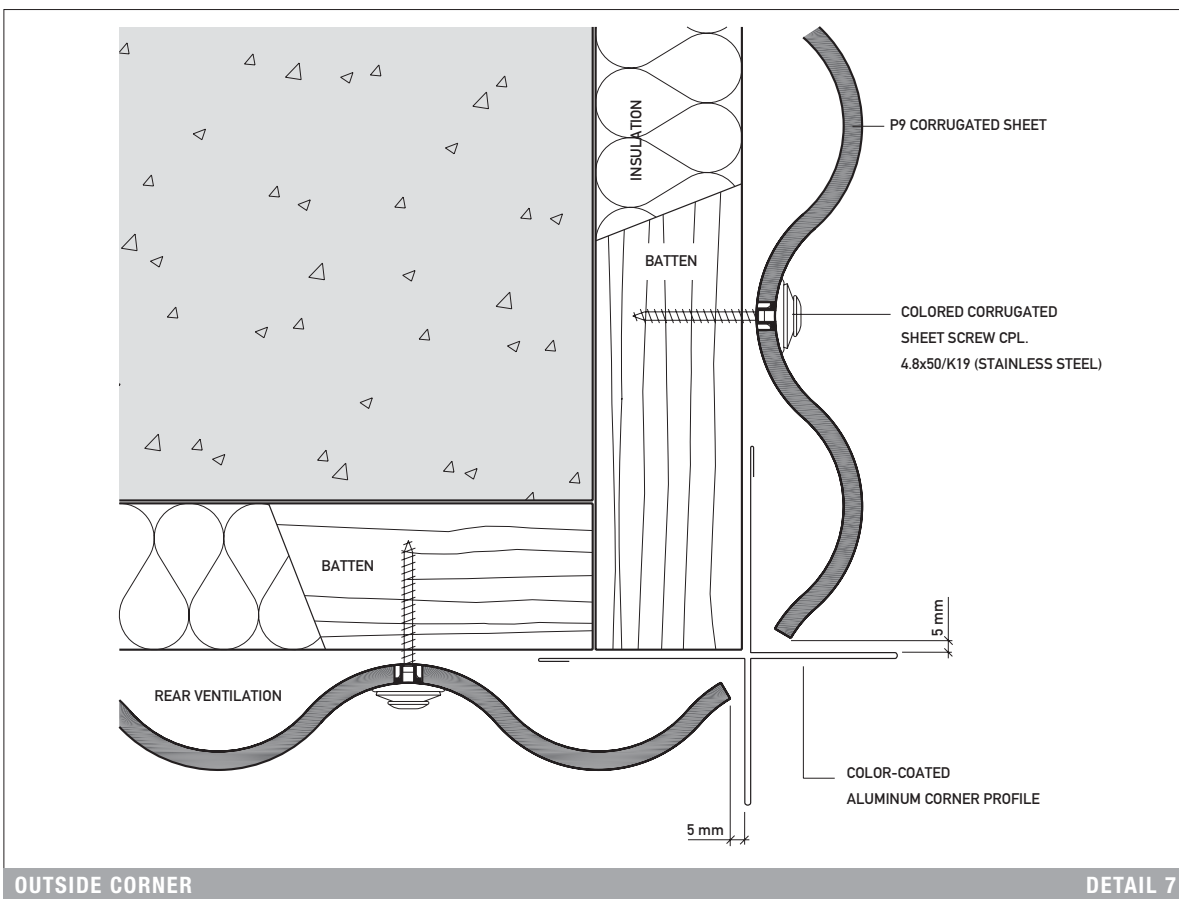
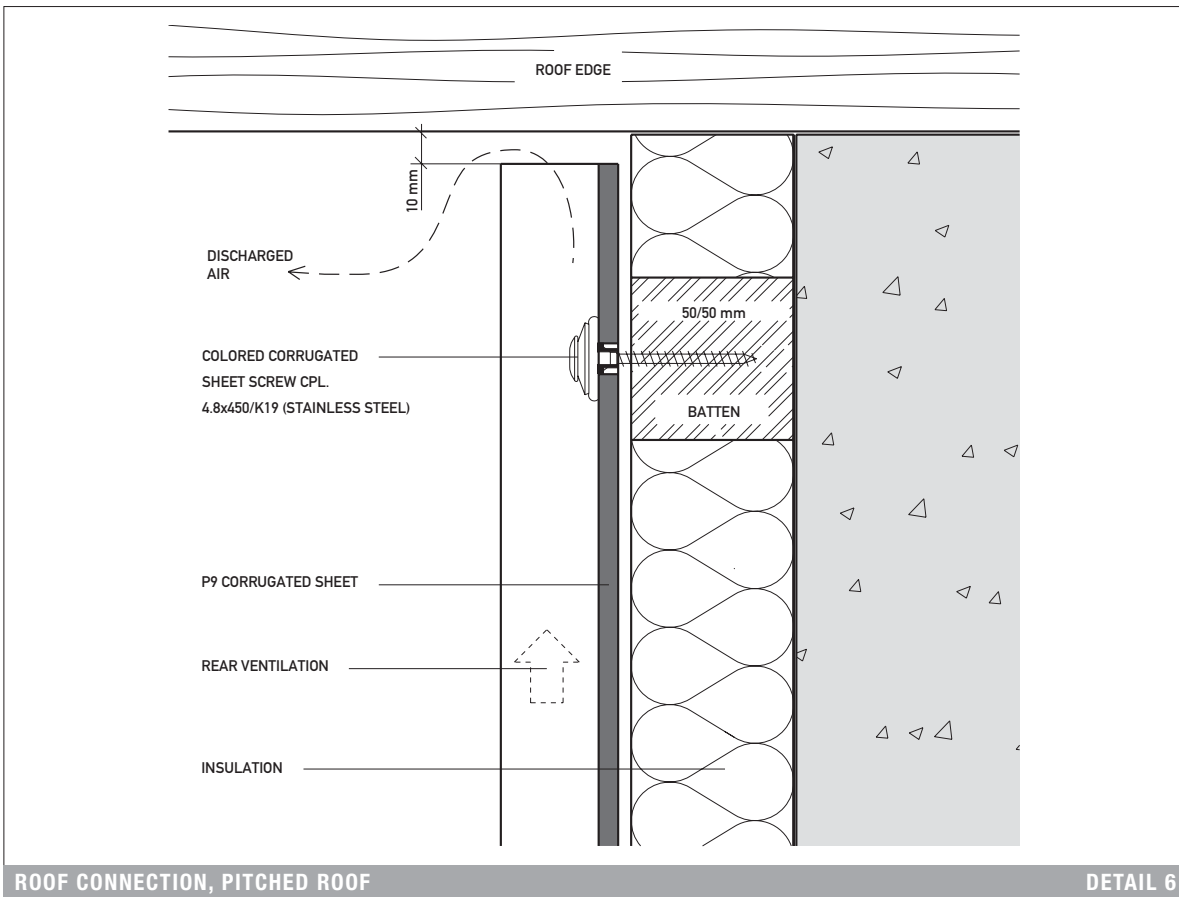
# FAÇADE

VERTICAL  
WOOD  
SUBSTRUCTURE





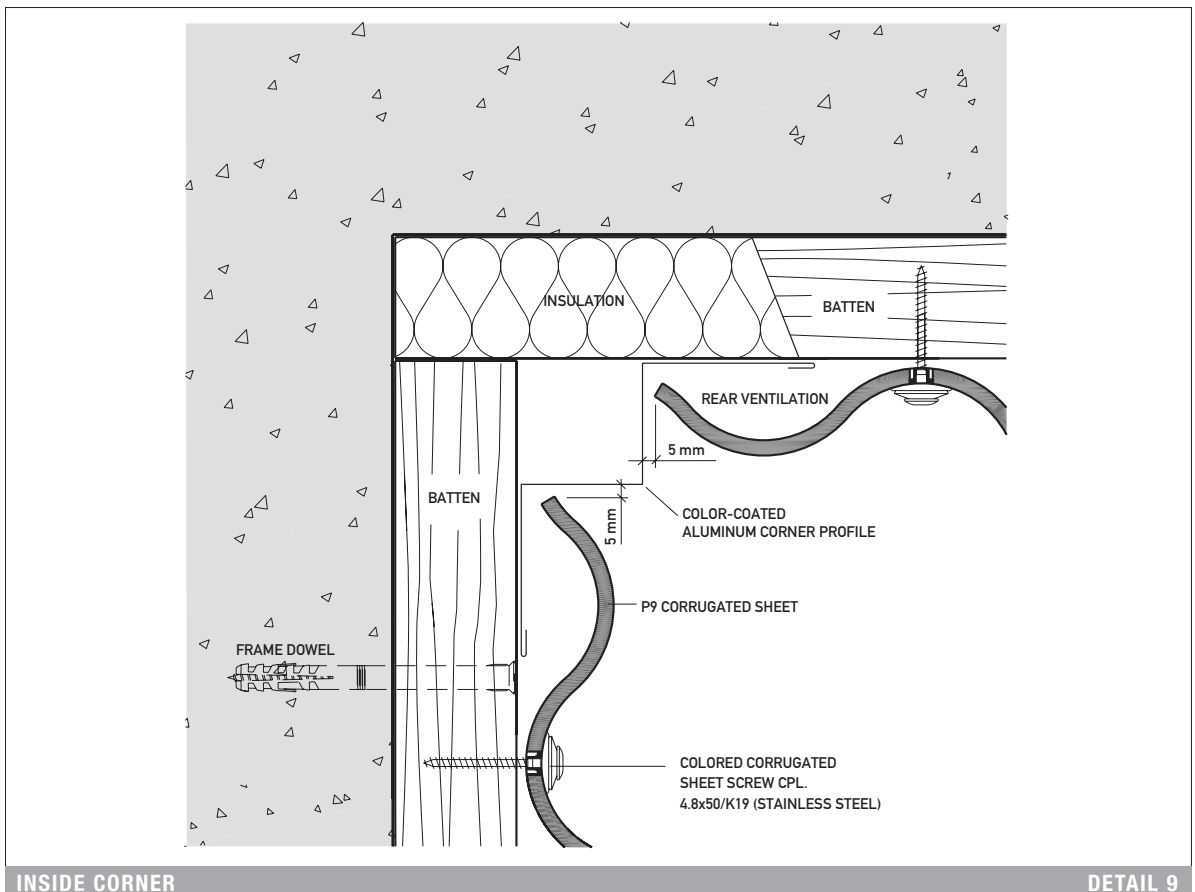
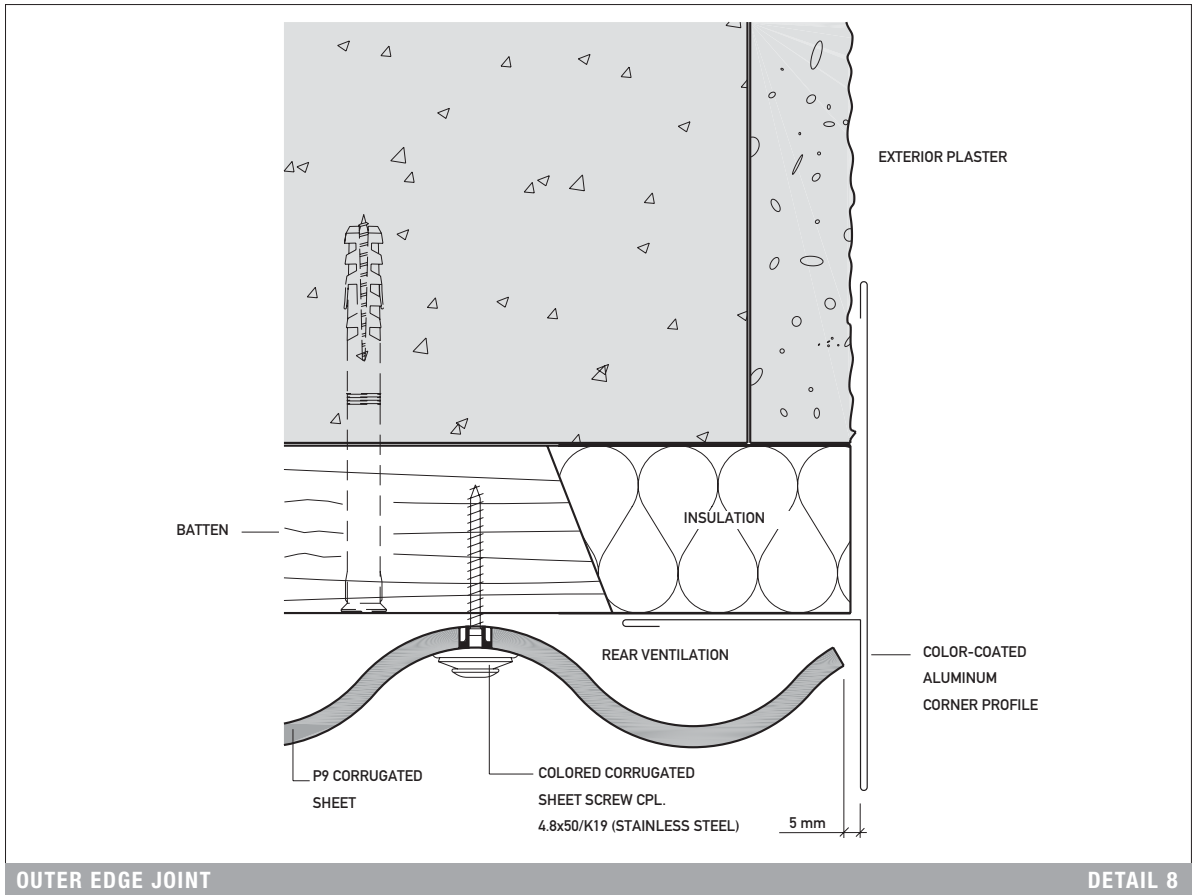
VERTICAL  
WOOD  
SUBSTRUCTURE

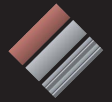




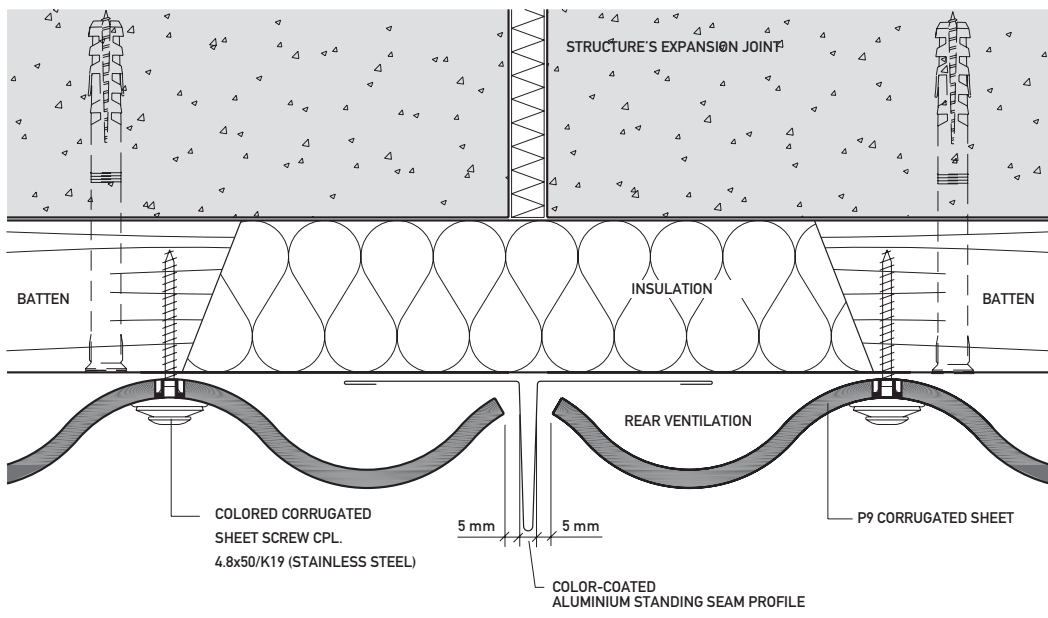
# FAÇADE

VERTICAL  
WOOD  
SUBSTRUCTURE



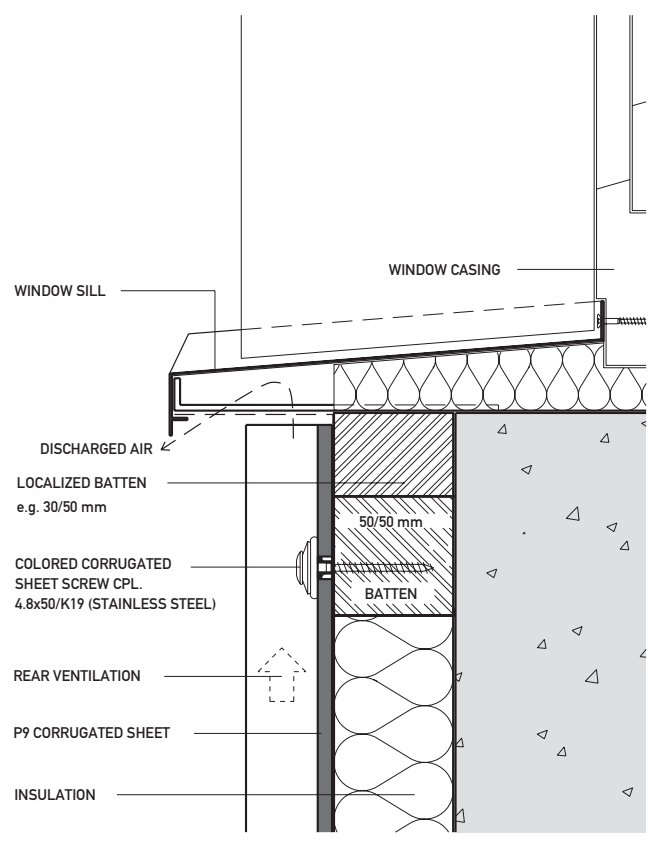


VERTICAL  
WOOD  
SUBSTRUCTURE



EXPANSION JOINT

DETAIL 10



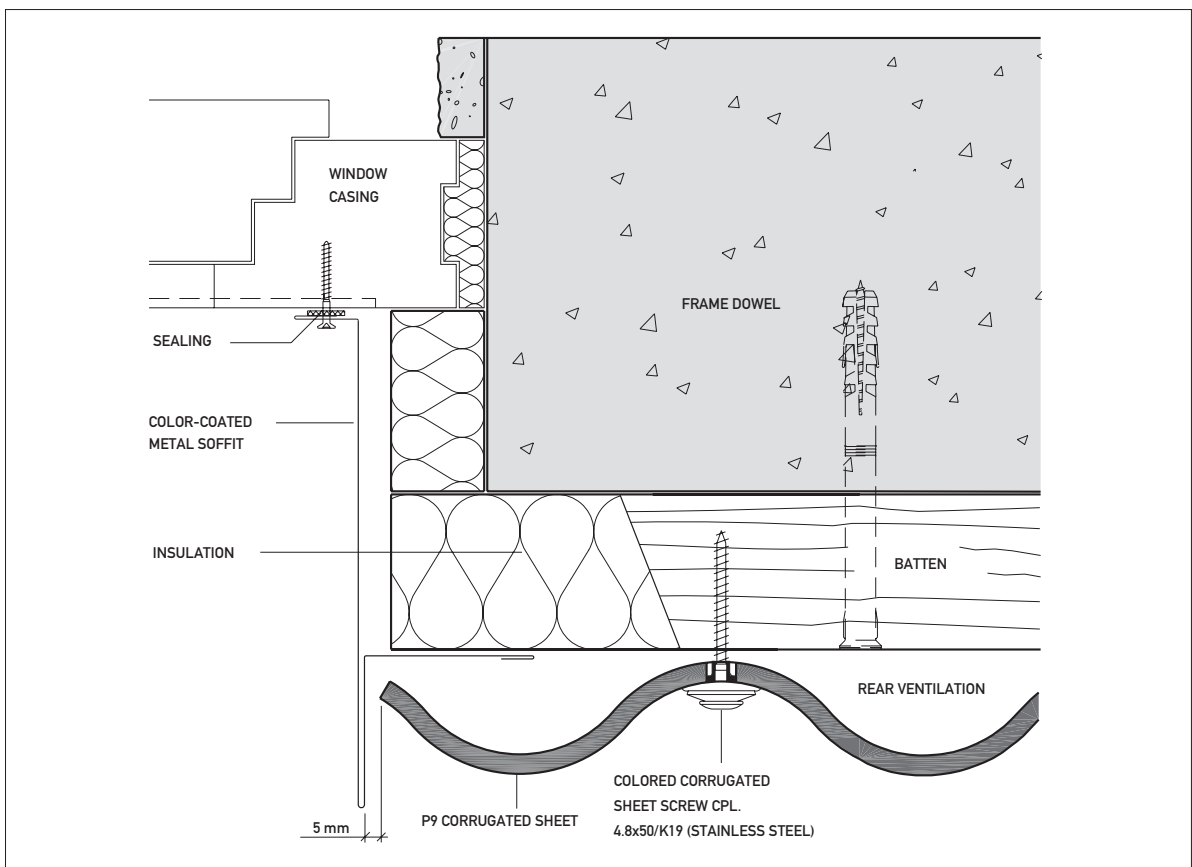
WINDOW SILL

DETAIL 11



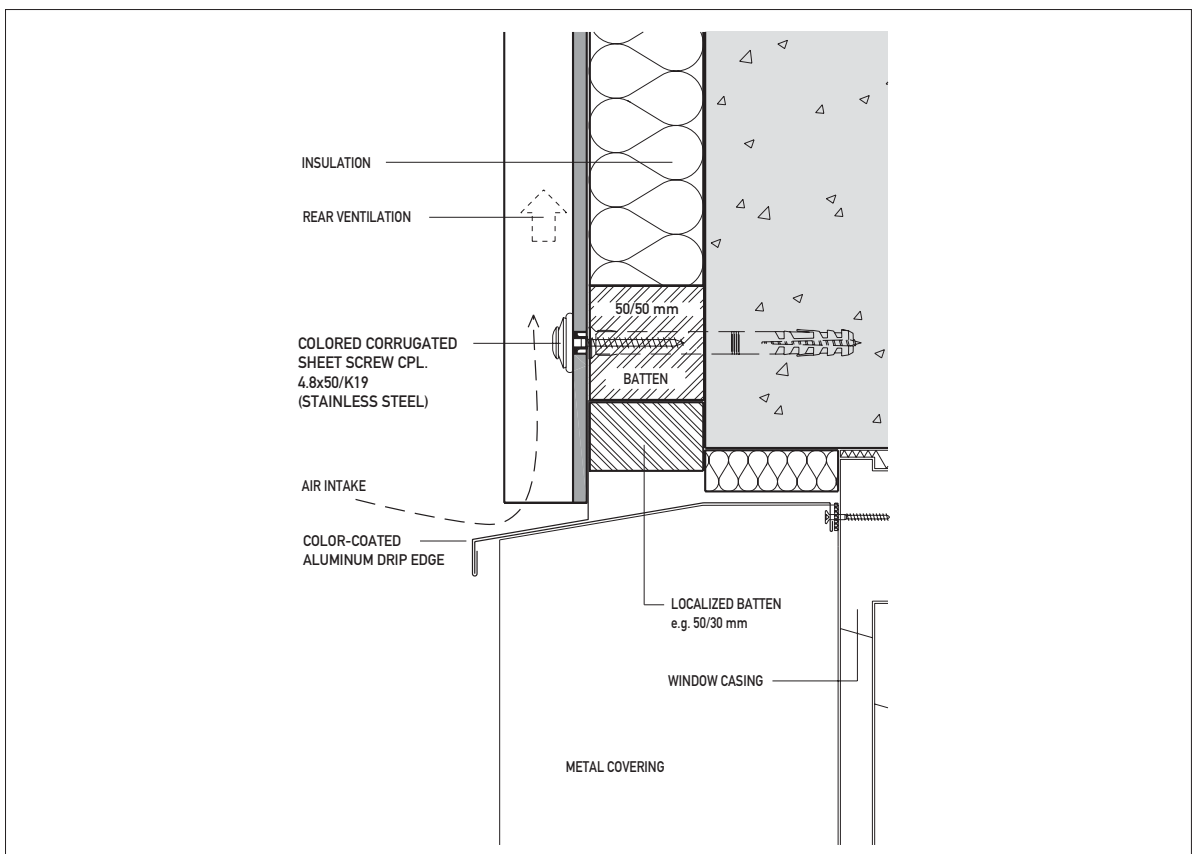
# FAÇADE

## VERTICAL WOOD SUBSTRUCTURE



WINDOW SOFFIT

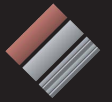
DETAIL 12



WINDOW LINTEL

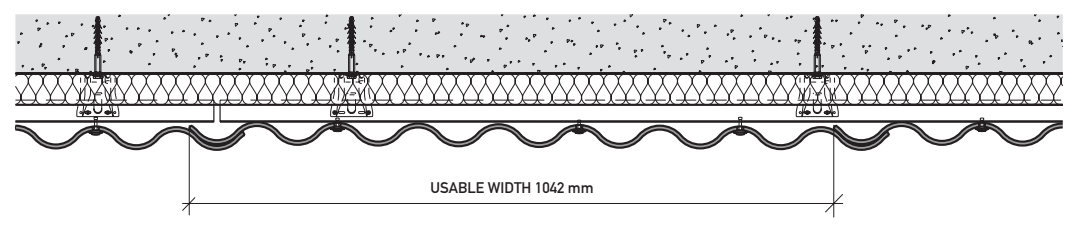
DETAIL 13





# FAÇADE

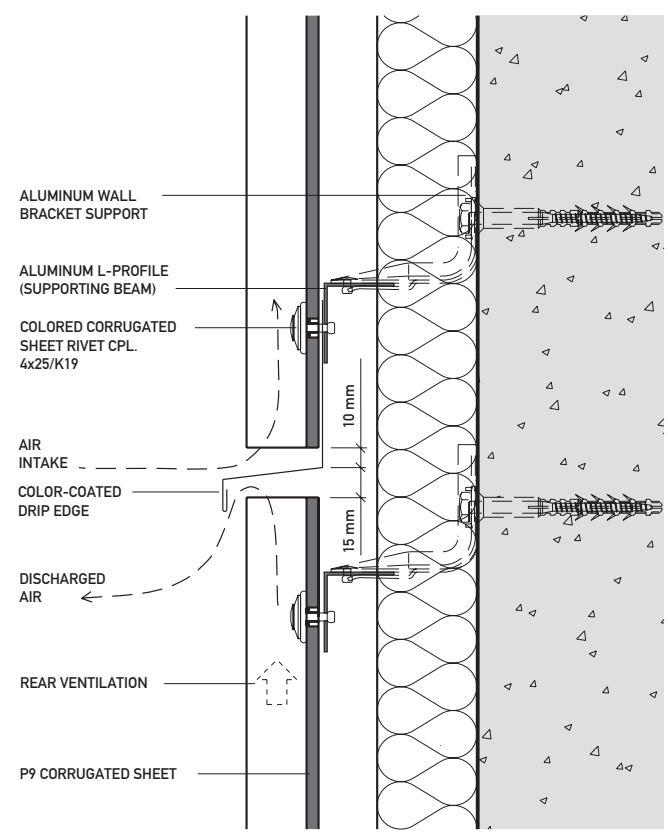
## VERTICAL ALUMINUM SUBSTRUCTURE



SHEET ARRANGEMENT  
The embossed stamp  
must be covered over!

HORIZONTALLY CUT DETAIL 2

78

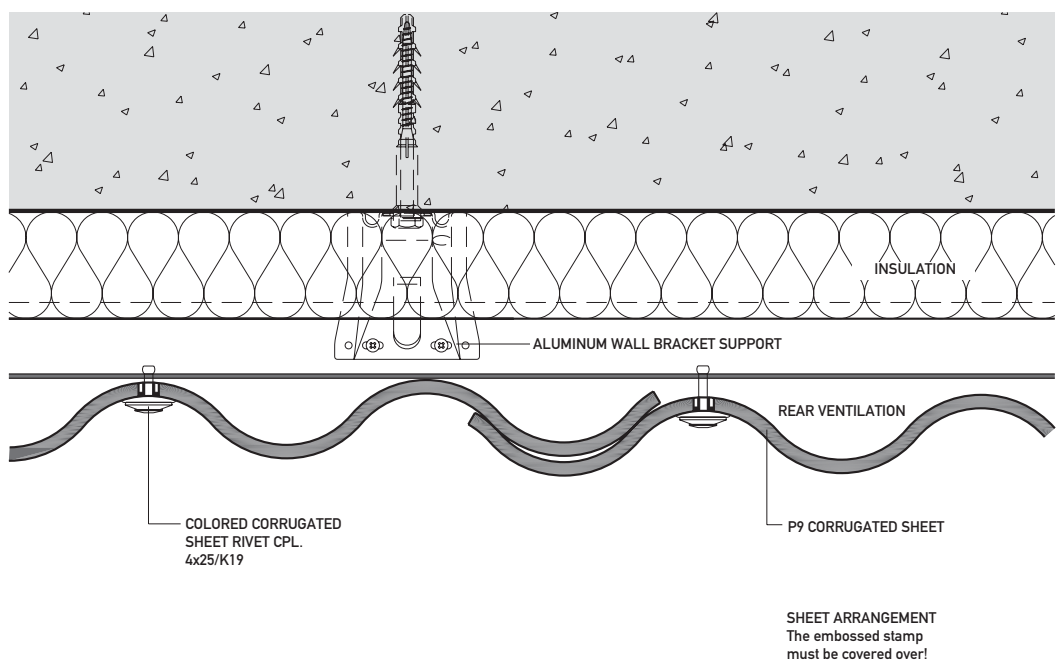


Further information at [www.eternit.at](http://www.eternit.at)

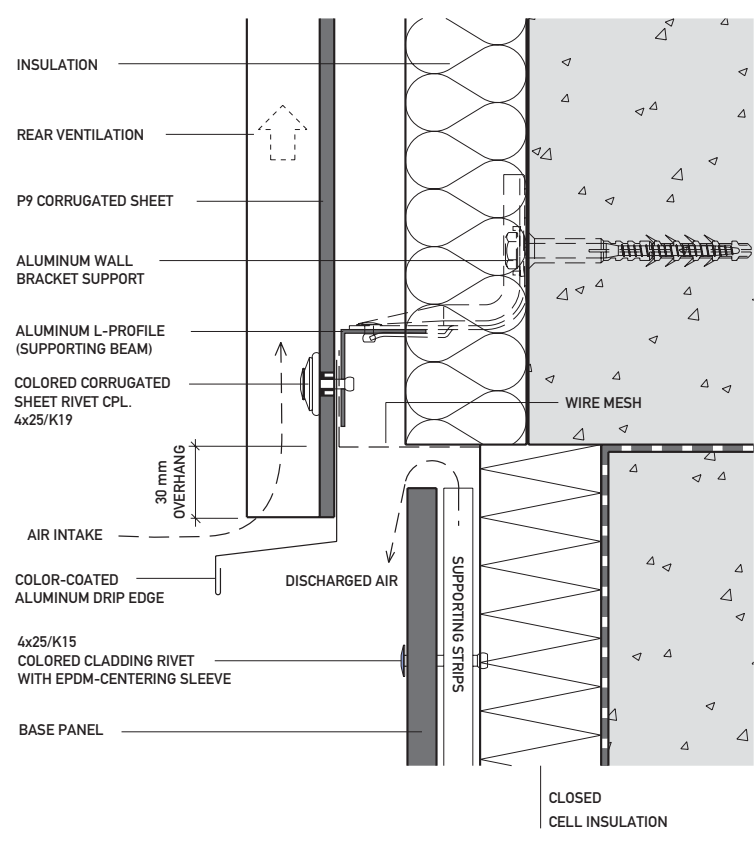
HORIZONTAL JOINT WITH DRIP EDGE DETAIL 3



VERTICAL  
ALUMINUM  
SUBSTRUCTURE



LATERAL OVERLAP DETAIL 4

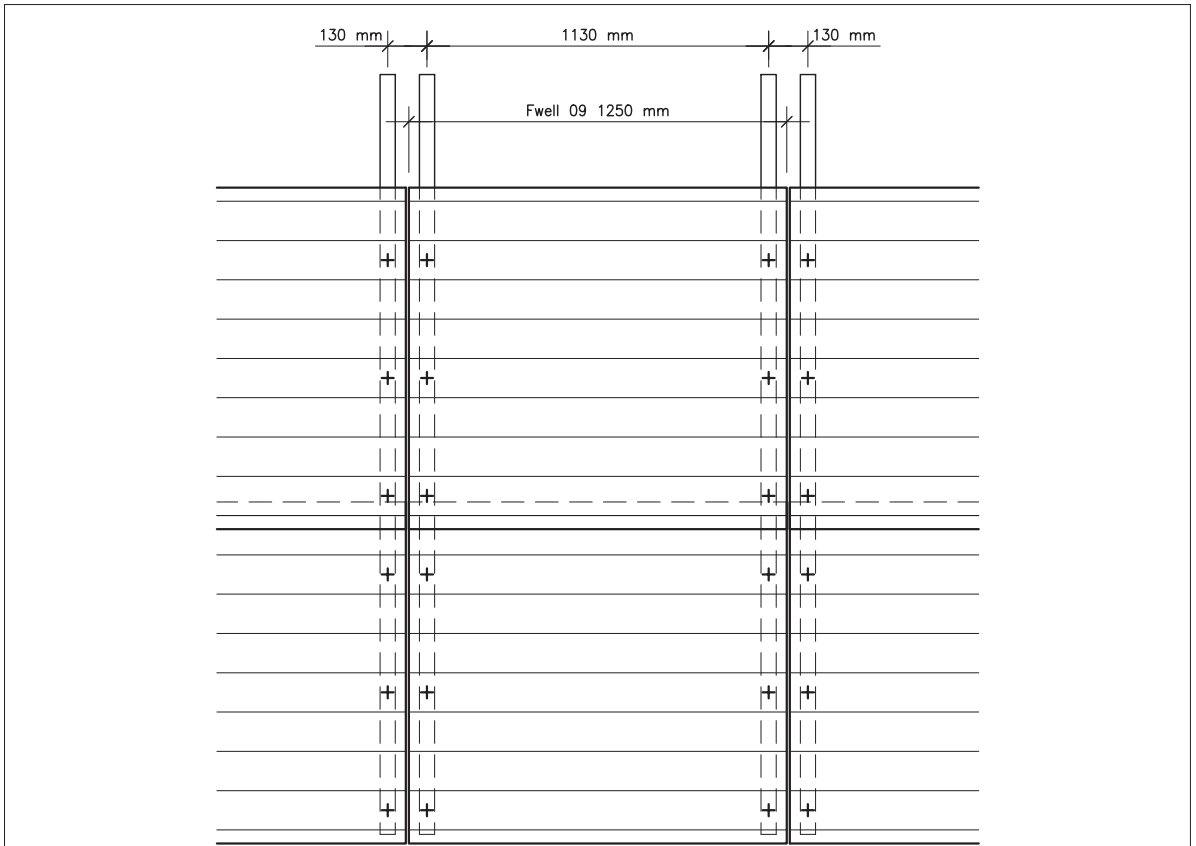


BASE JOINT DETAIL 5



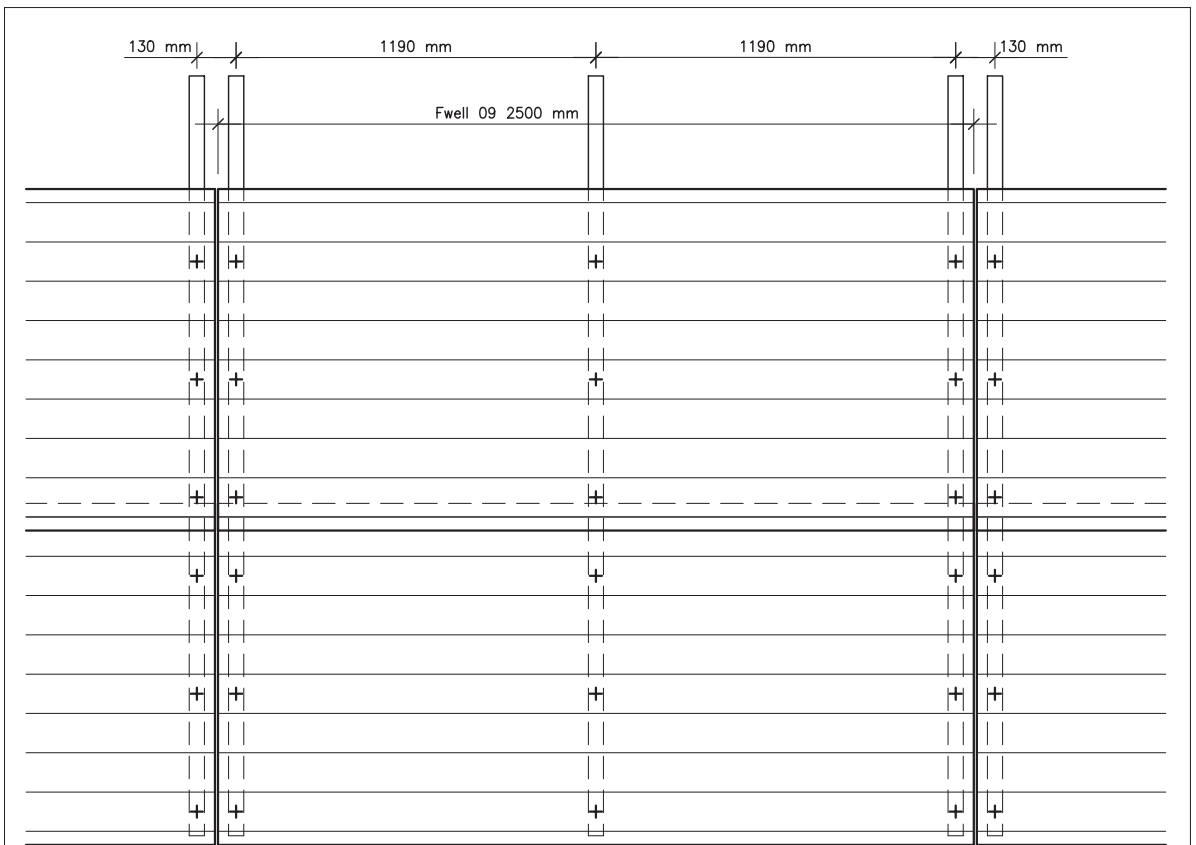
# FAÇADE

HORIZONTAL  
WOOD  
SUBSTRUCTURE



FASTENING AXIAL DISTANCE FOR LENGTHS OF 1250 MM

DETAIL 1



FASTENING AXIAL DISTANCE FOR LENGTHS OF 2500 MM

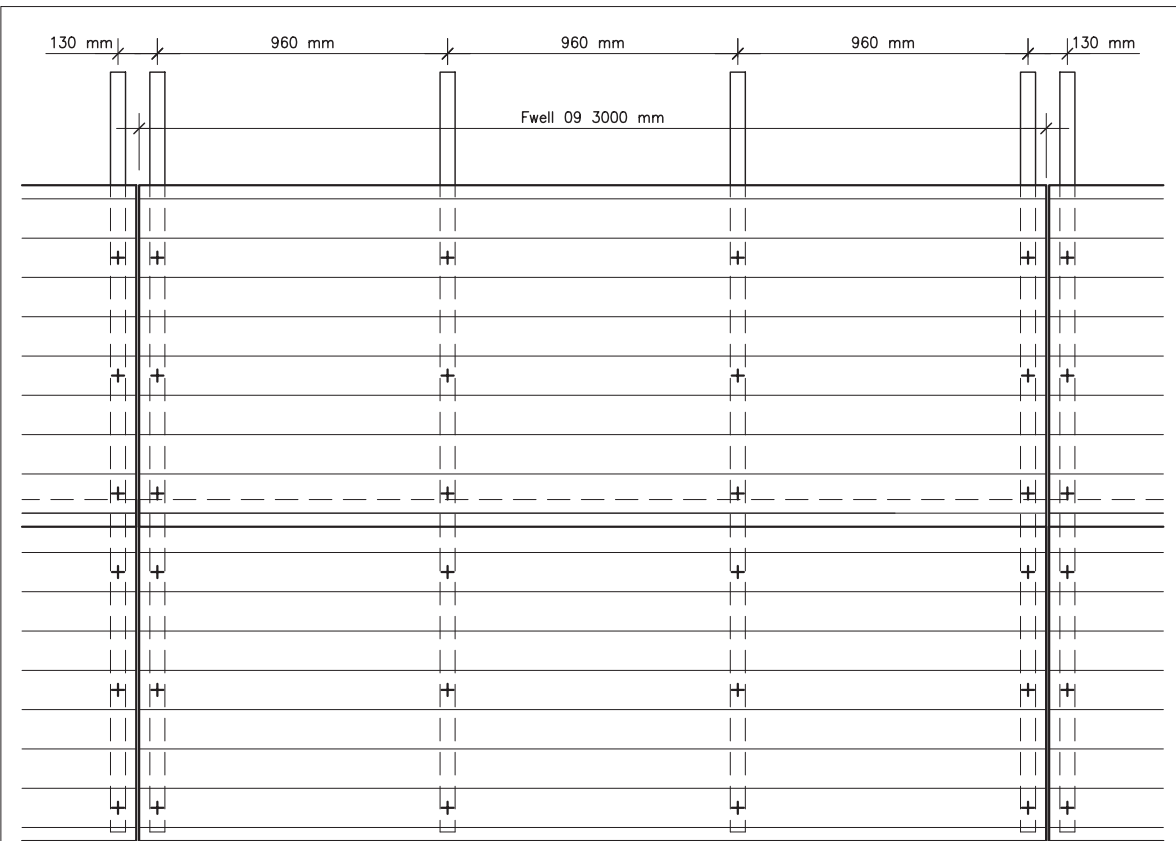
DETAIL 2

80

Further  
information at  
[www.eternit.at](http://www.eternit.at)

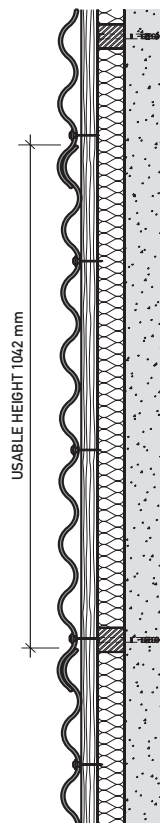


HORIZONTAL  
WOOD  
SUBSTRUCTURE



FASTENING AXIAL DISTANCE FOR LENGTHS OF 3000 MM

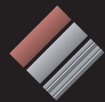
DETAIL 3



SHEET ARRANGEMENT  
The embossed stamp  
must be covered over!

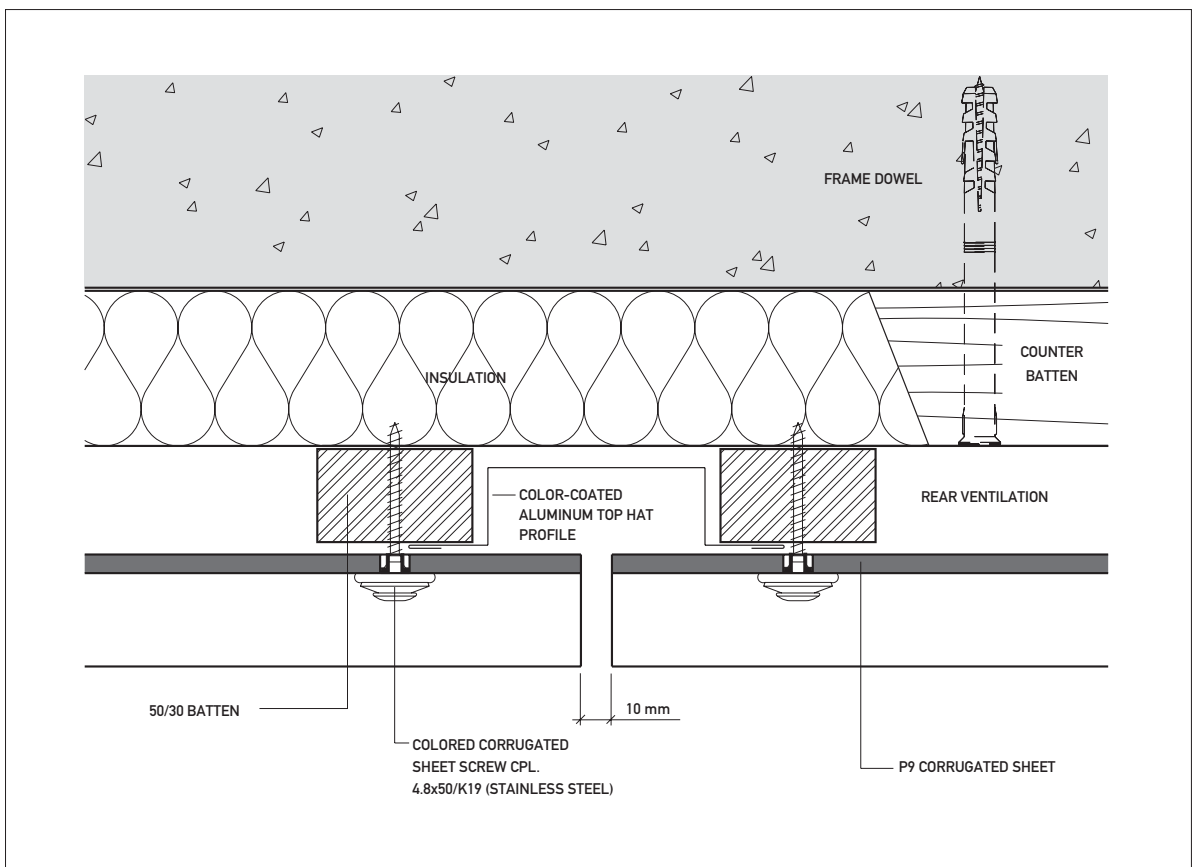
SIDE VIEW

DETAIL 4



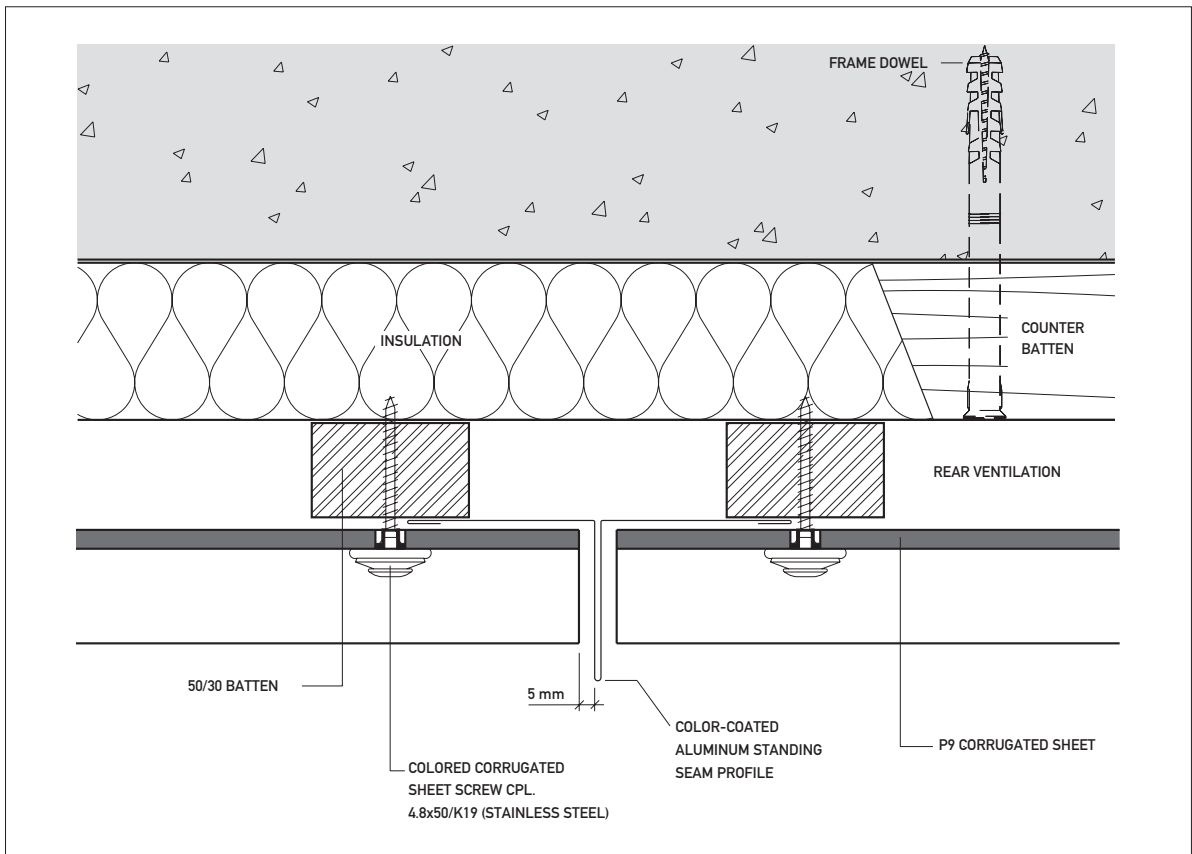
# FAÇADE

HORIZONTAL  
WOOD  
SUBSTRUCTURE



VERTICAL JOINT WITH TOP HAT PROFILE DETAIL 5

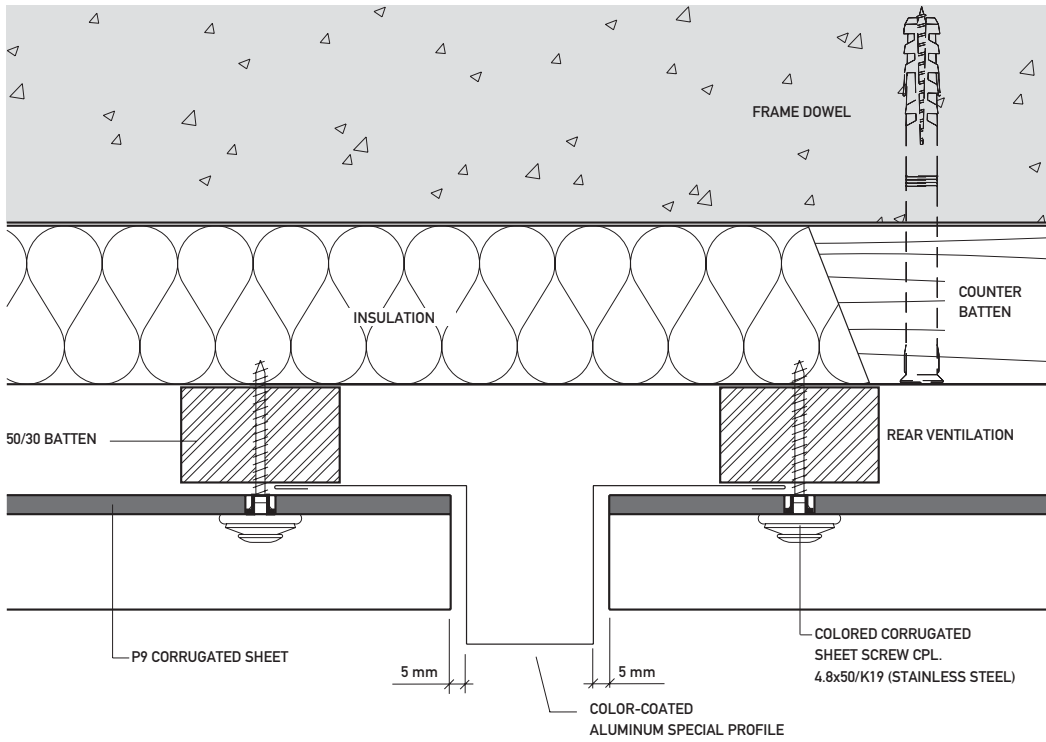
82



VERTICAL JOINT WITH VERTICAL JOINT PROFILE DETAIL 6

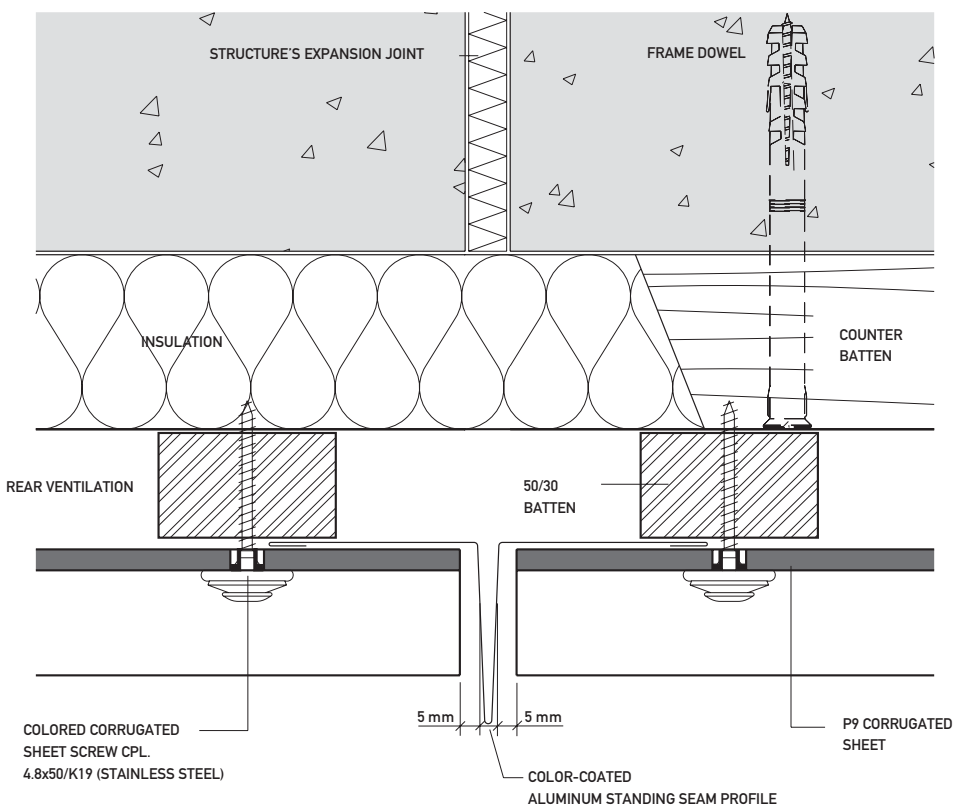
Further information at [www.ternit.at](http://www.ternit.at)

HORIZONTAL  
WOOD  
SUBSTRUCTURE



VERTICAL JOINT WITH SPECIAL PROFILE

DETAIL 7

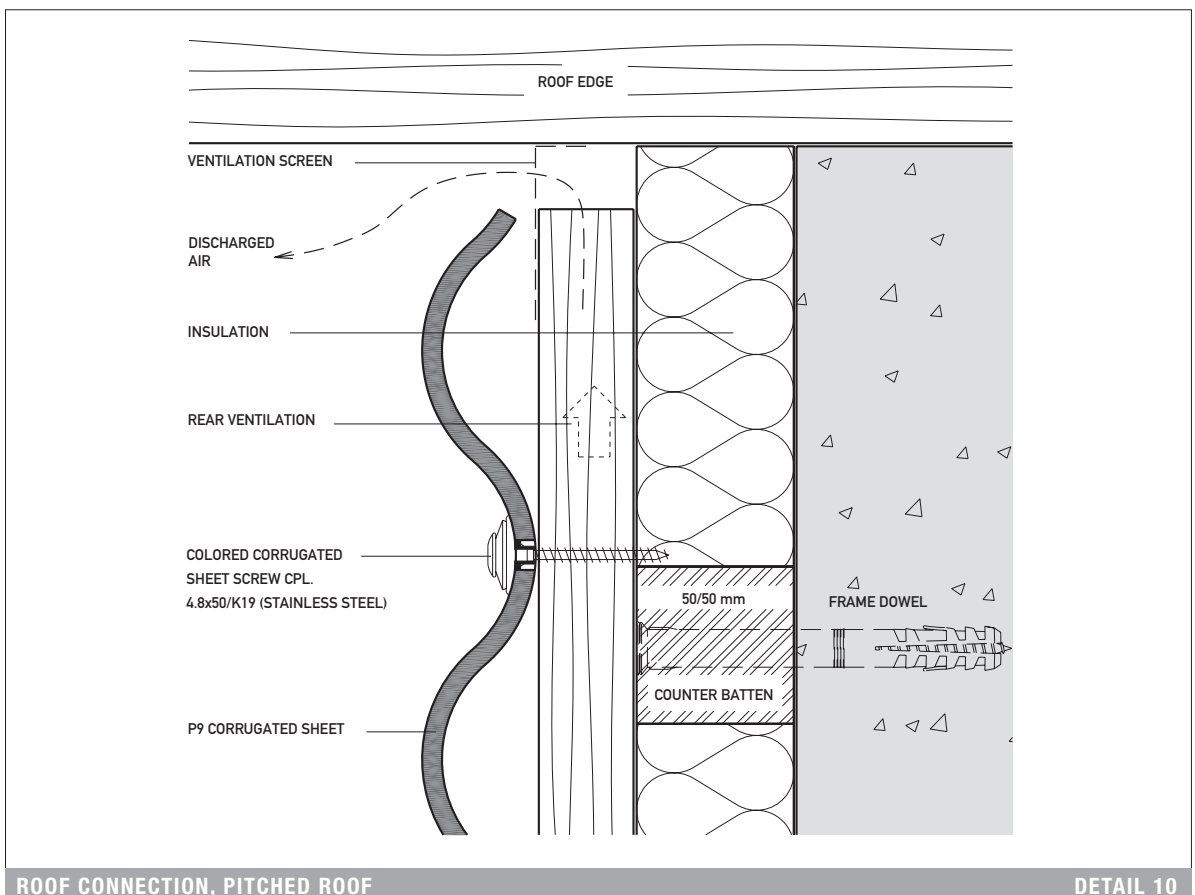
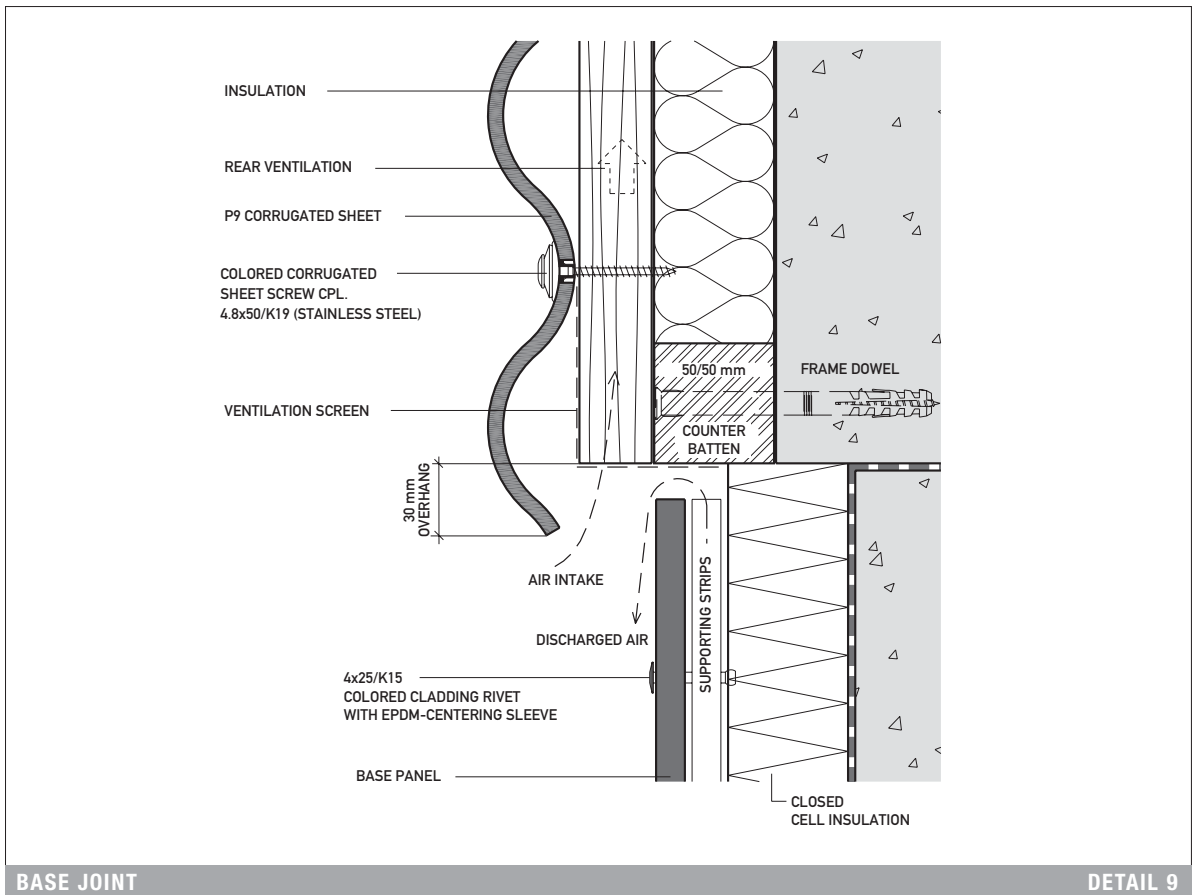


EXPANSION JOINT

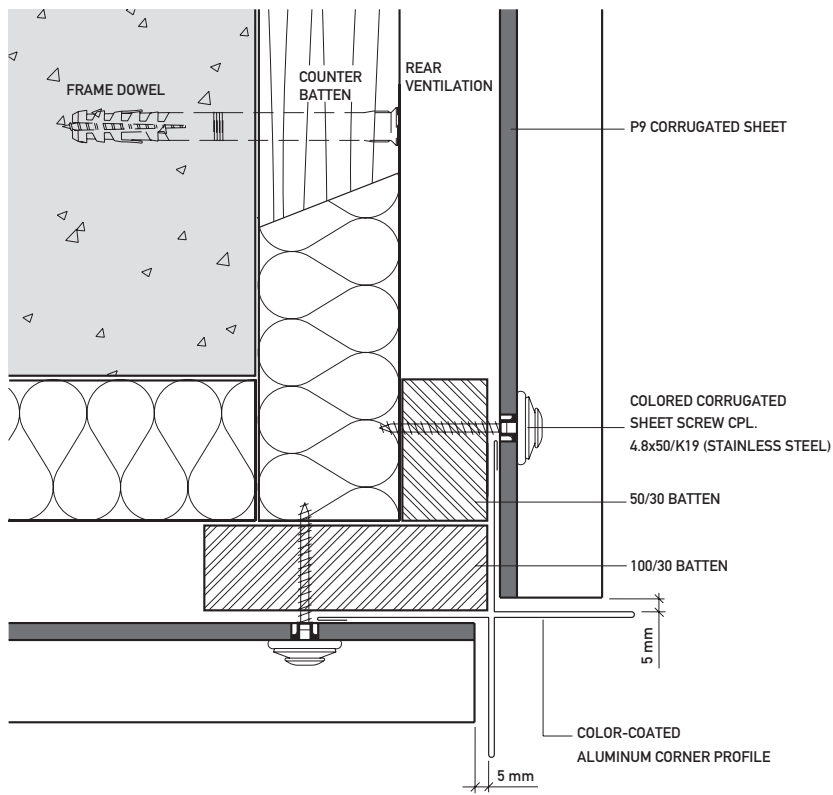
DETAIL 8

# FAÇADE

## HORIZONTAL WOOD SUBSTRUCTURE

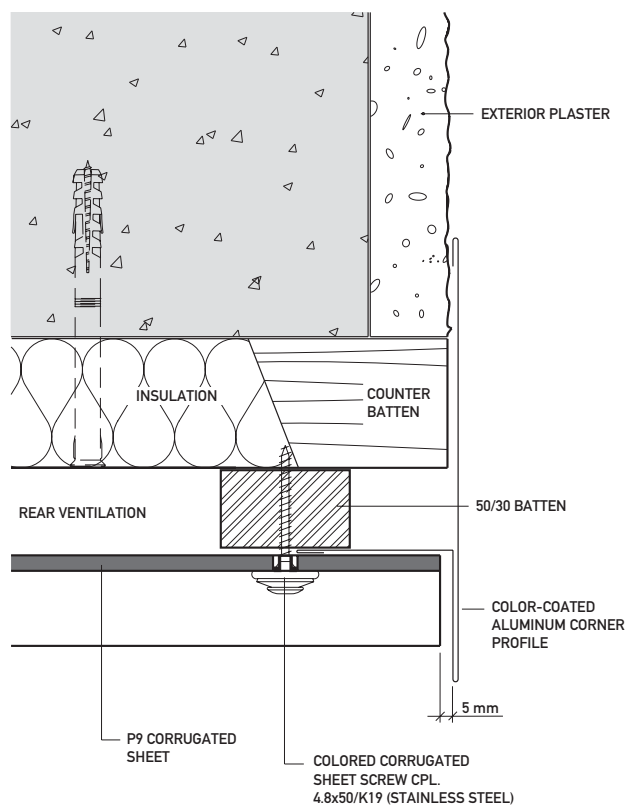


HORIZONTAL  
WOOD  
SUBSTRUCTURE



OUTER EDGE WITH CORNER PROFILE

DETAIL 11

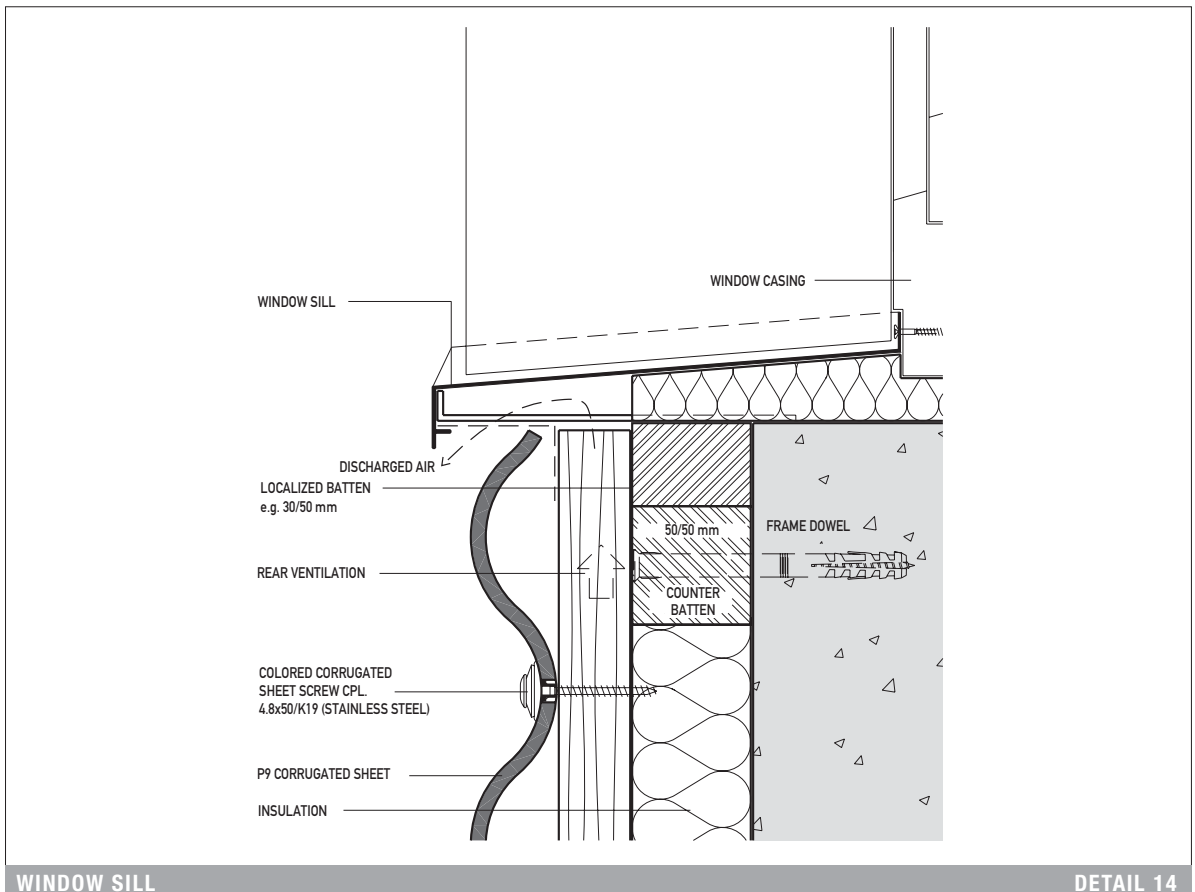
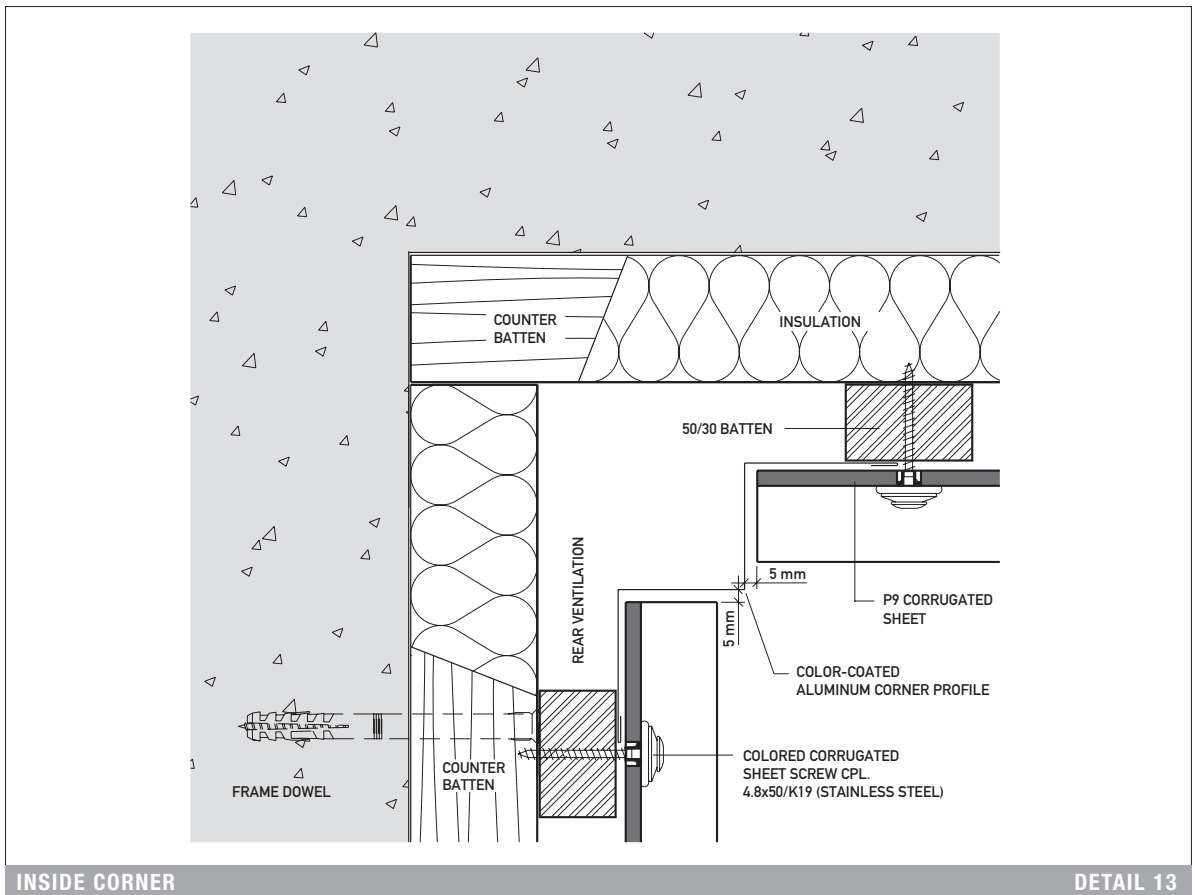


OUTER EDGE JOINT

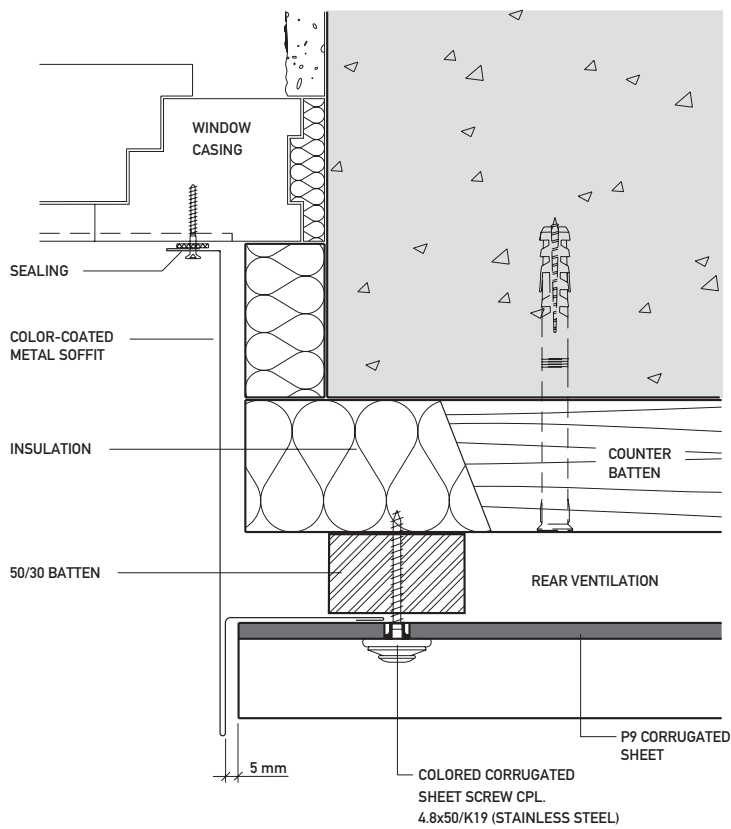
DETAIL 12

# FAÇADE

## HORIZONTAL WOOD SUBSTRUCTURE

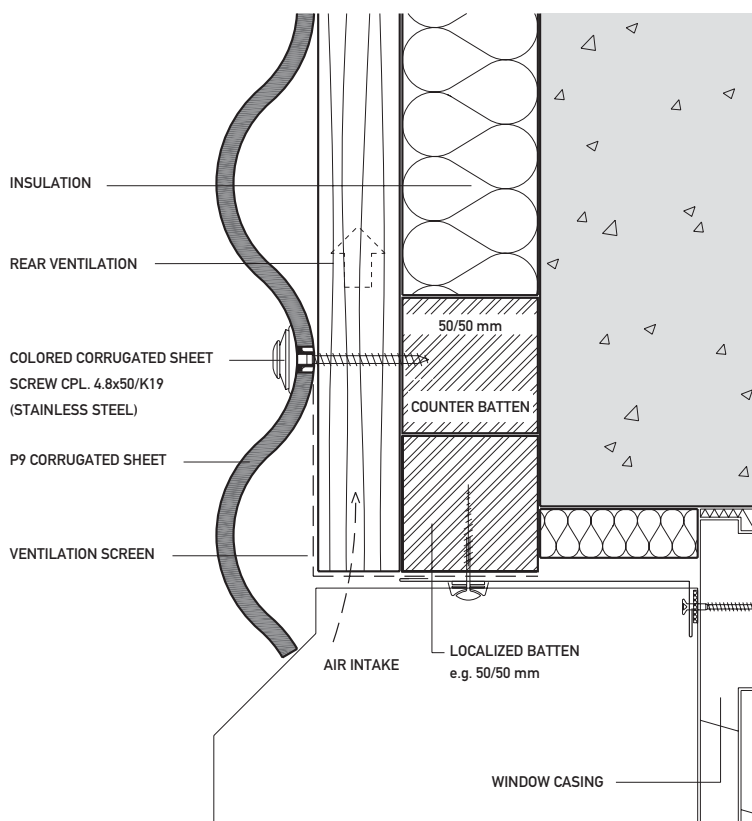


HORIZONTAL  
WOOD  
SUBSTRUCTURE



WINDOW SOFFIT

DETAIL 15

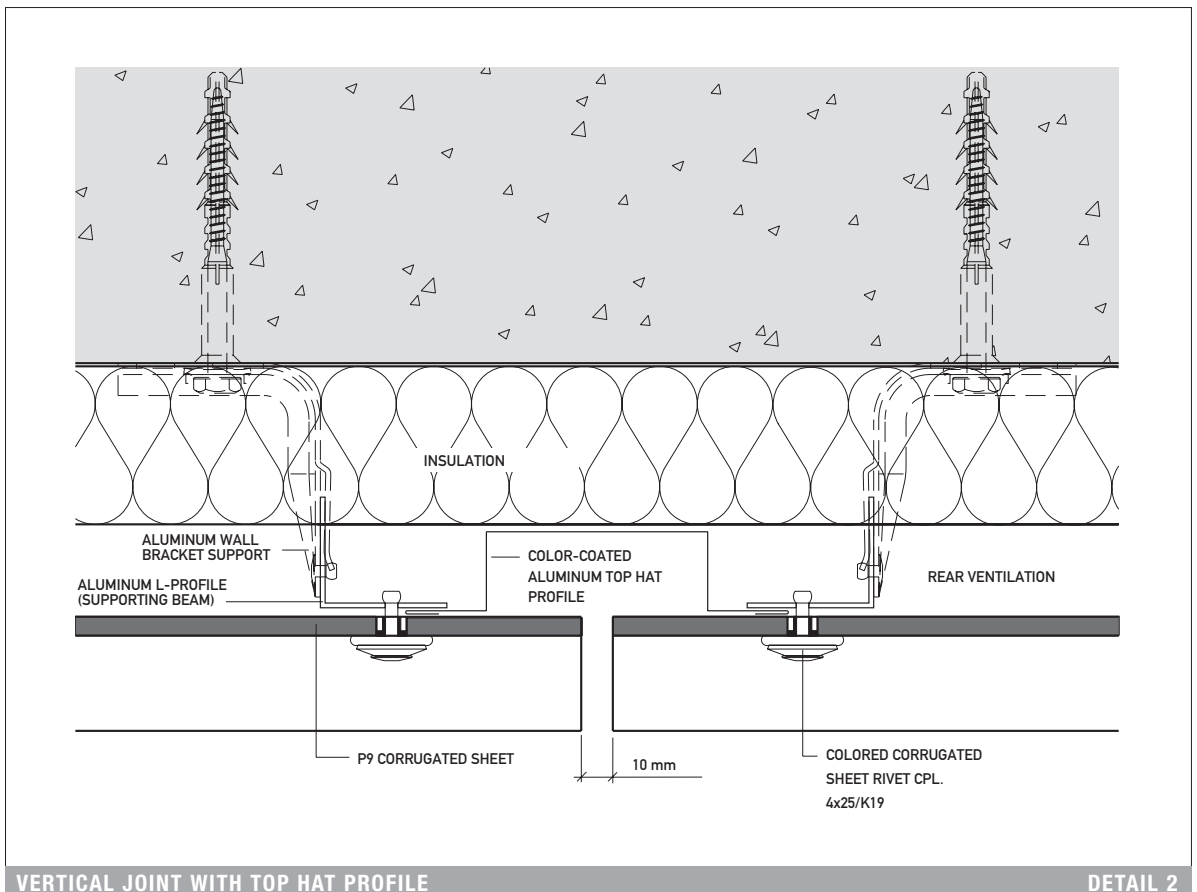
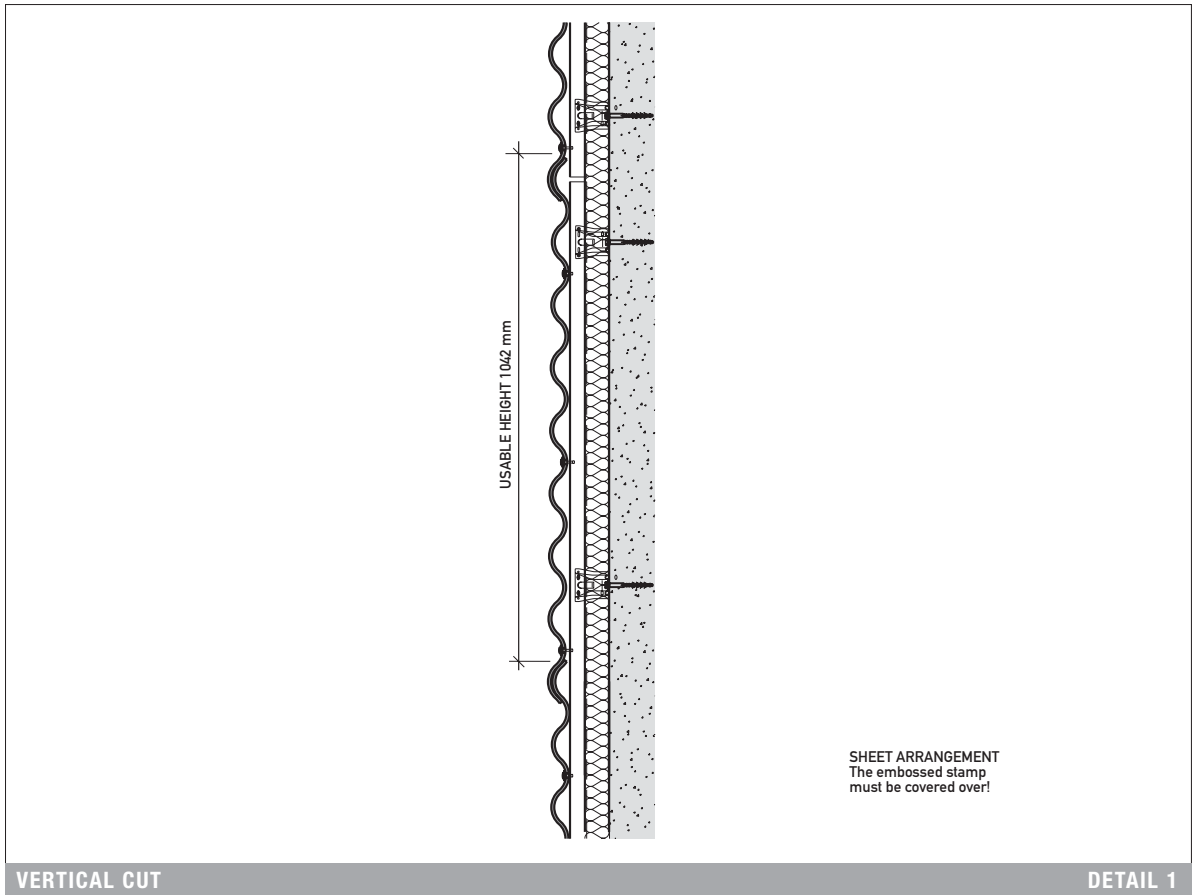


WINDOW LINTEL

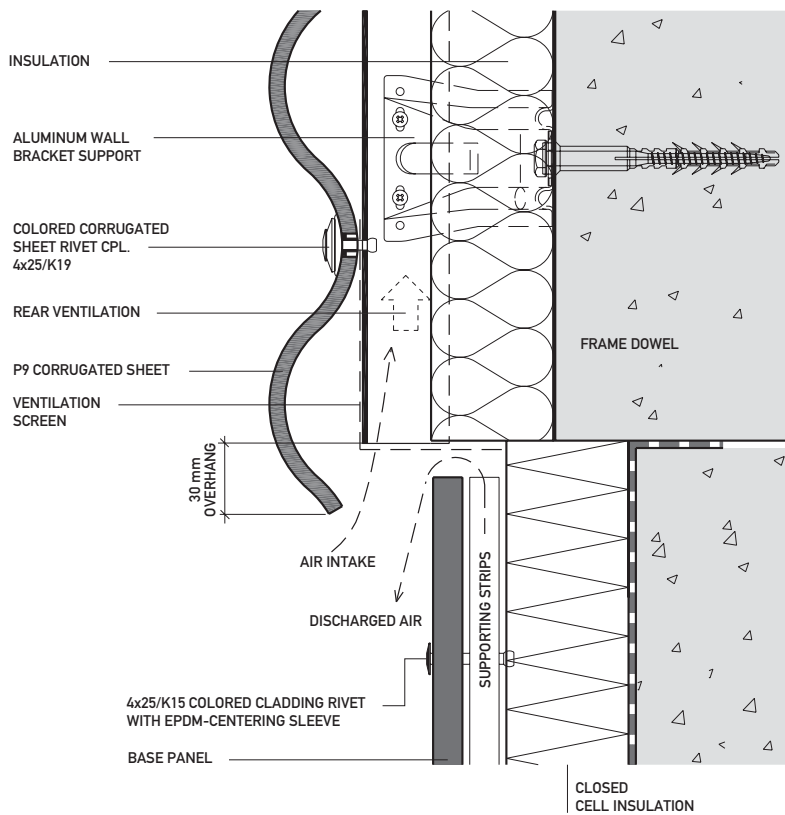
DETAIL 16

# FAÇADE

## HORIZONTAL ALUMINUM SUBSTRUCTURE

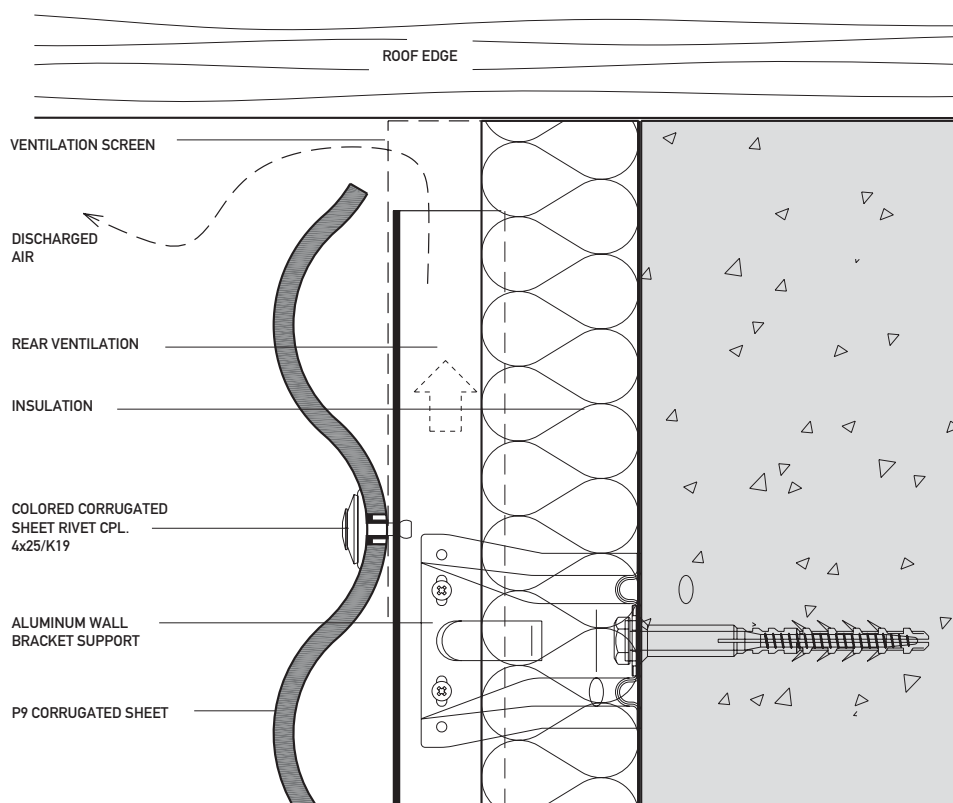


HORIZONTAL  
ALUMINUM  
SUBSTRUCTURE



BASE JOINT

DETAIL 3



ROOF CONNECTION, PITCHED ROOF

DETAIL 4